



Jakub Kaluzny

Big problems with big
data –
Hadoop interfaces
security

whoami

Sr. IT Security Consultant at SecuRing

- Consulting all phases of development
- penetration tests
- high-risk applications and systems

Researcher

- Hadoop, FOREX, MFP printers, proprietary network protocols

Agenda

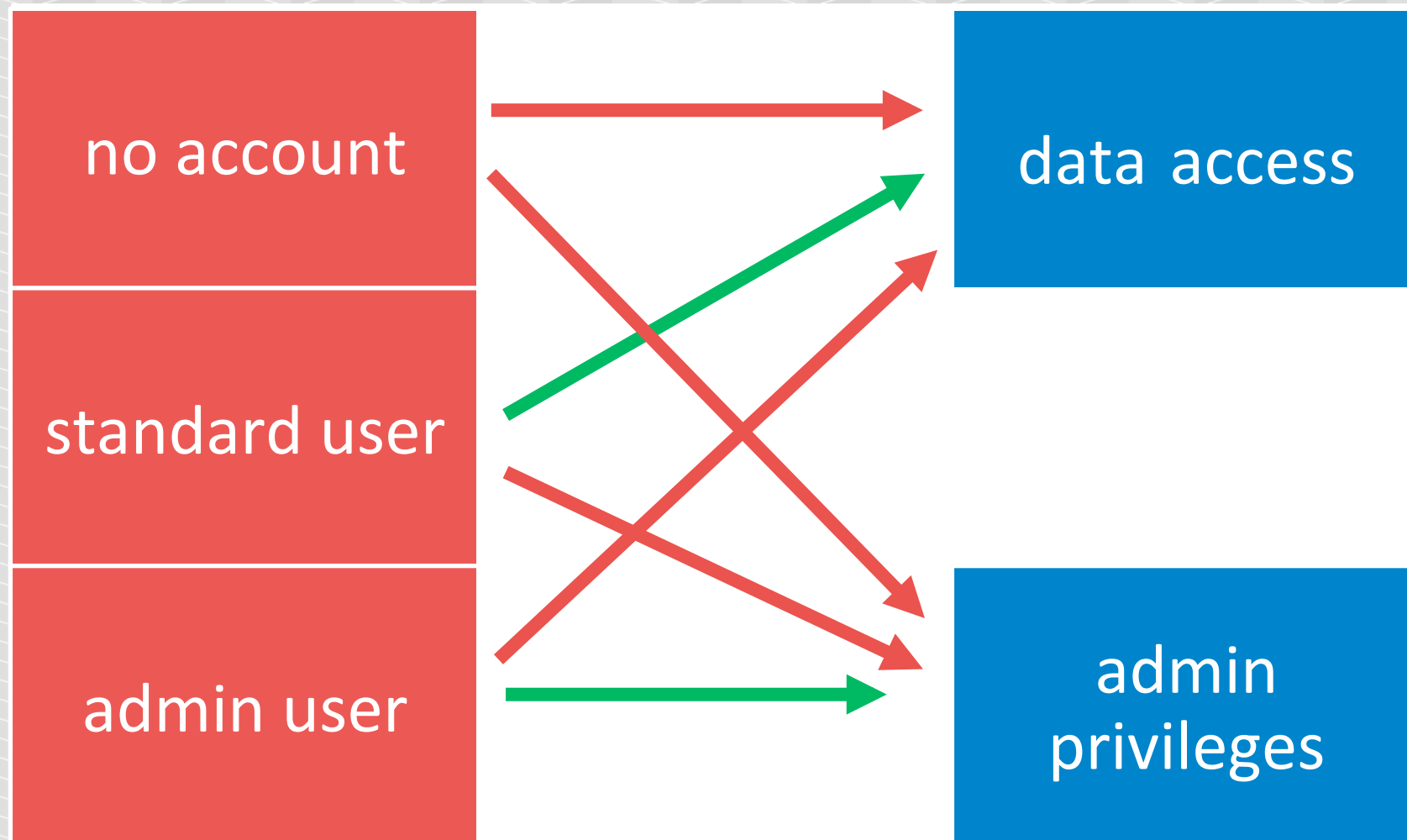
Big data nonsenses

Crash course on hacking Hadoop installations

Ways to protect big data environments

Expect some CVEs

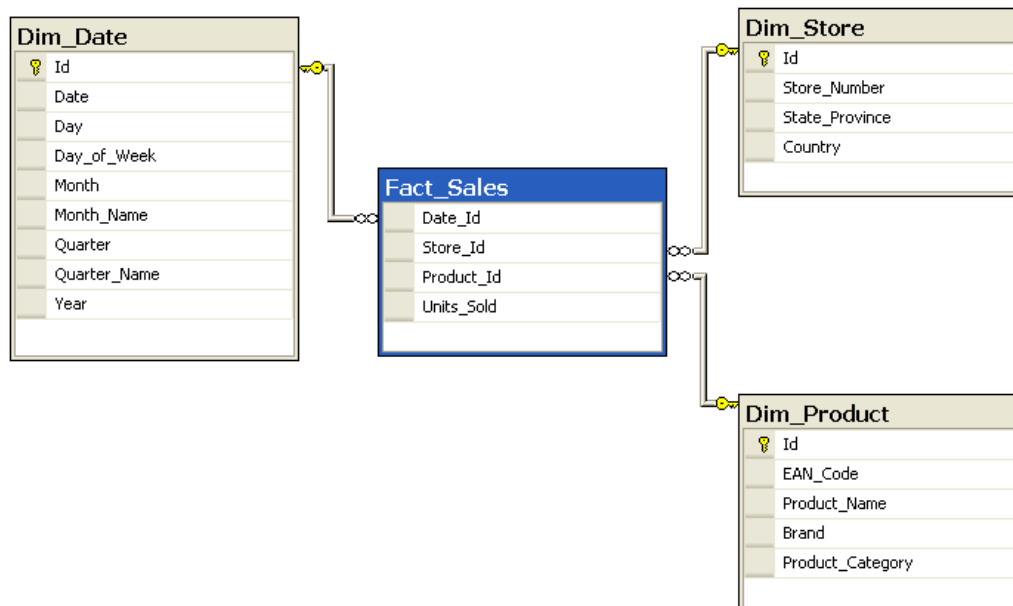
Results summary



WHAT IS HADOOP?

Know your target

Normal database



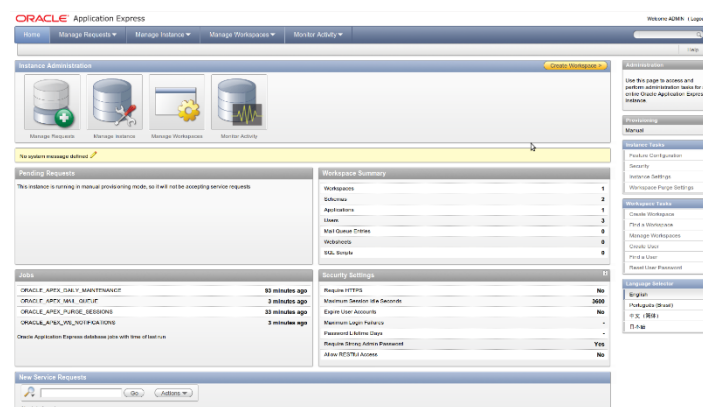
Users

Roles

Data

Model

Normal database architecture



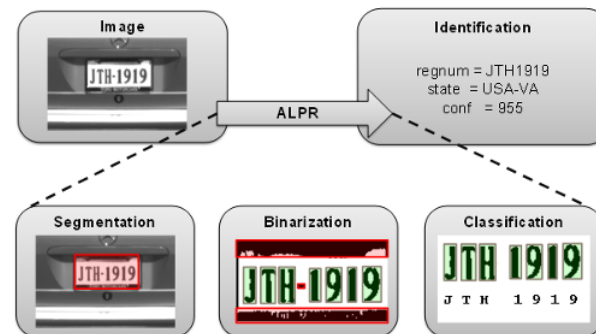
Still normal database scenario



<http://hackaday.com/2014/04/04/sql-injection-fools-speed-traps-and-clears-your-record/>



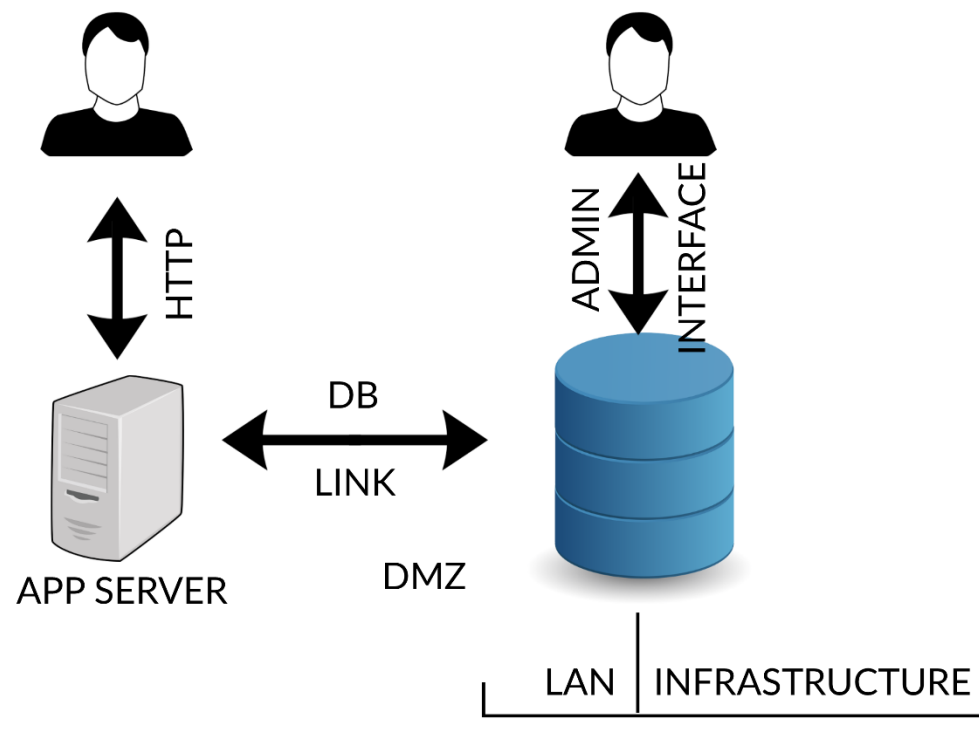
<http://nococonnect.blogspot.com/2015/06/red-light-cameras-in-columbia.html>



<http://8z4.net/images/ocr-technology>

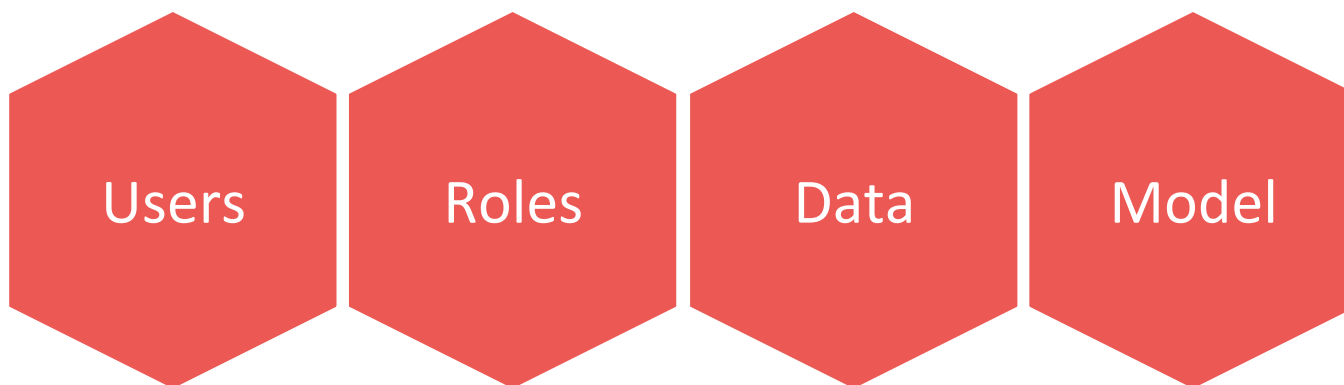
CWE-xxx: SQL Injection through license plate

Normal database injection points



Normal database

Clear rules



Clear target

Anecdote

user db,
a lot of clients

critical
banking data,
one supplier

Only one common table

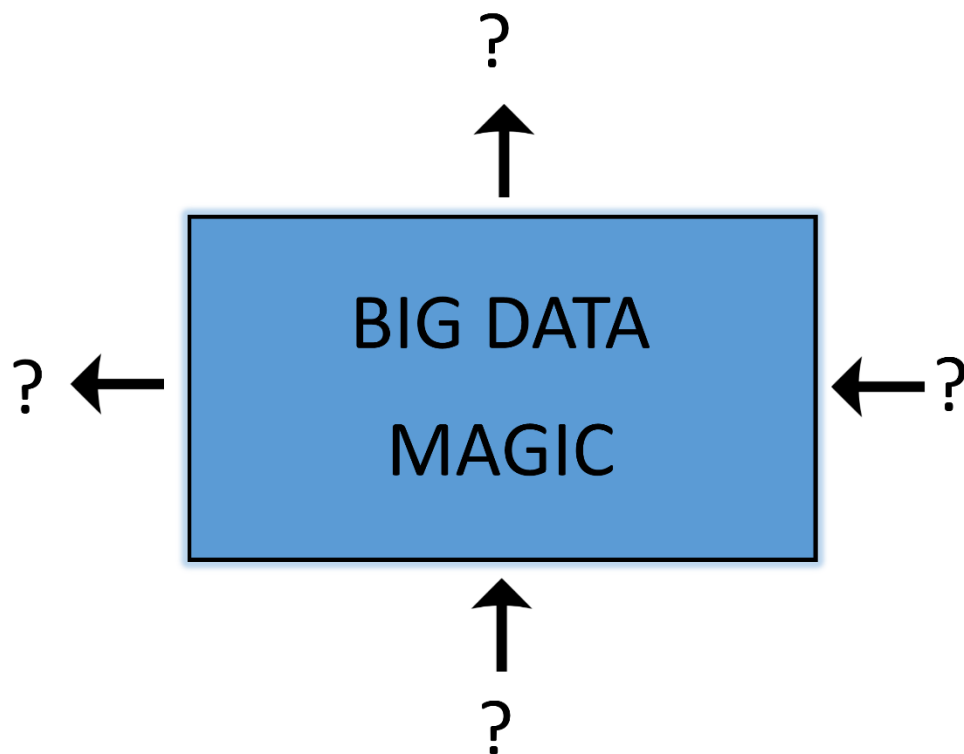
Q: Why don't you split it into 2 dbs with a db link?

A: Too much effort and we want to have fast statistics from all data.

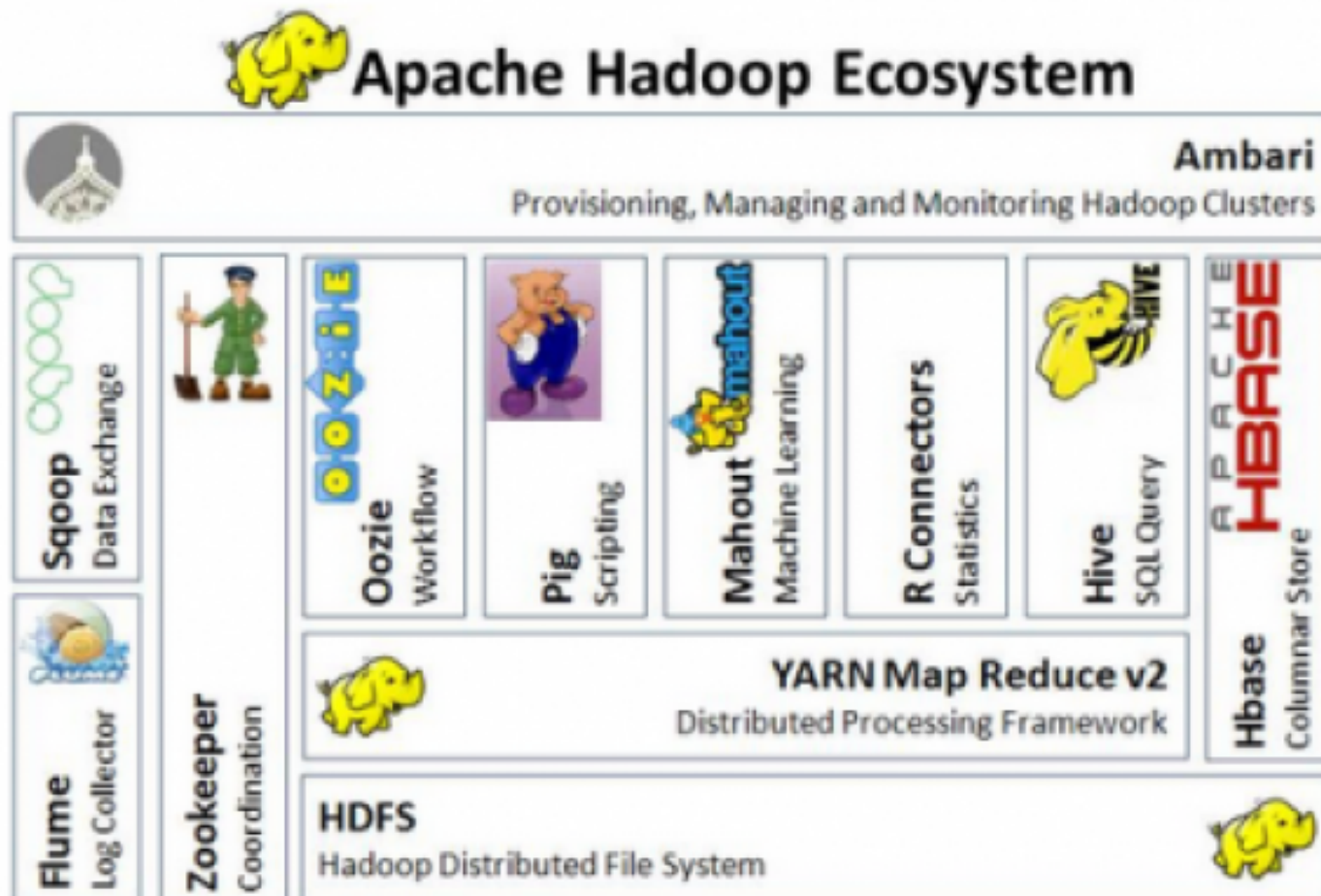
What is Hadoop?



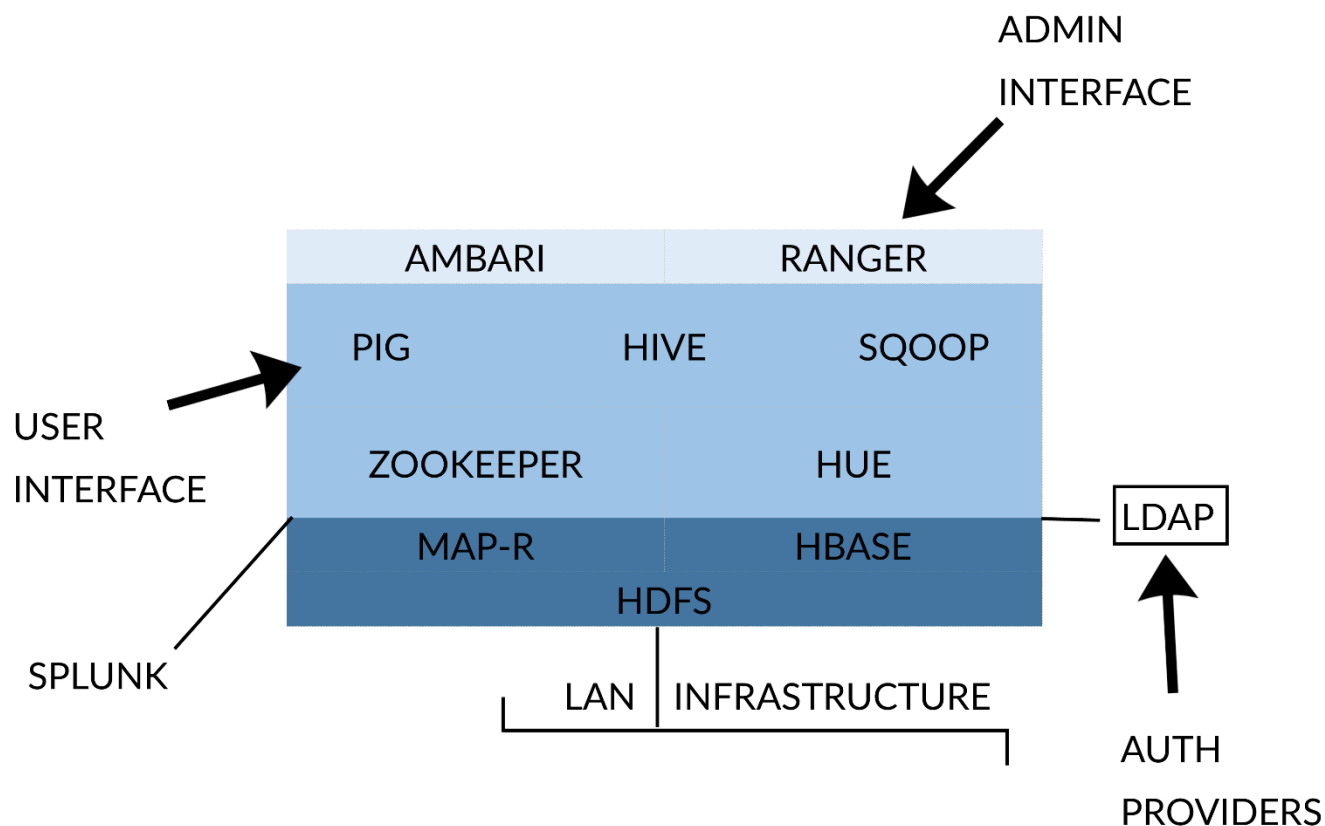
Hadoop architecture schema



More on Hadoop



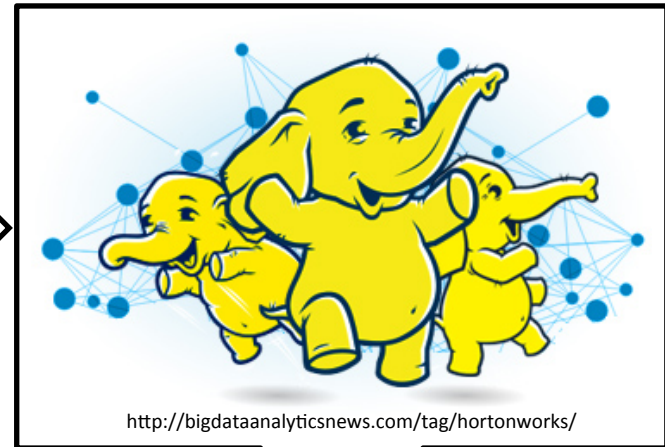
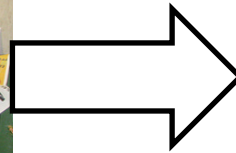
Hadoop injection points



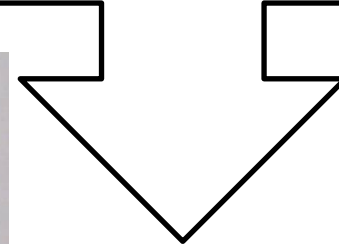
Hadoop scenario



<https://www.flickr.com/photos/mattimattila/8349565473>



<http://bigdataanalyticsnews.com/tag/hortonworks/>



<https://en.wikipedia.org/wiki/Moneygami>

What is a lot of data?

facebook

21 PB of storage in a single HDFS cluster

2000 machines

12 TB per machine (a few machines have 24 TB each)

1200 machines with 8 cores each + 800 machines with 16 cores each

32 GB of RAM per machine

15 map-reduce tasks per machine

What is a lot of data?

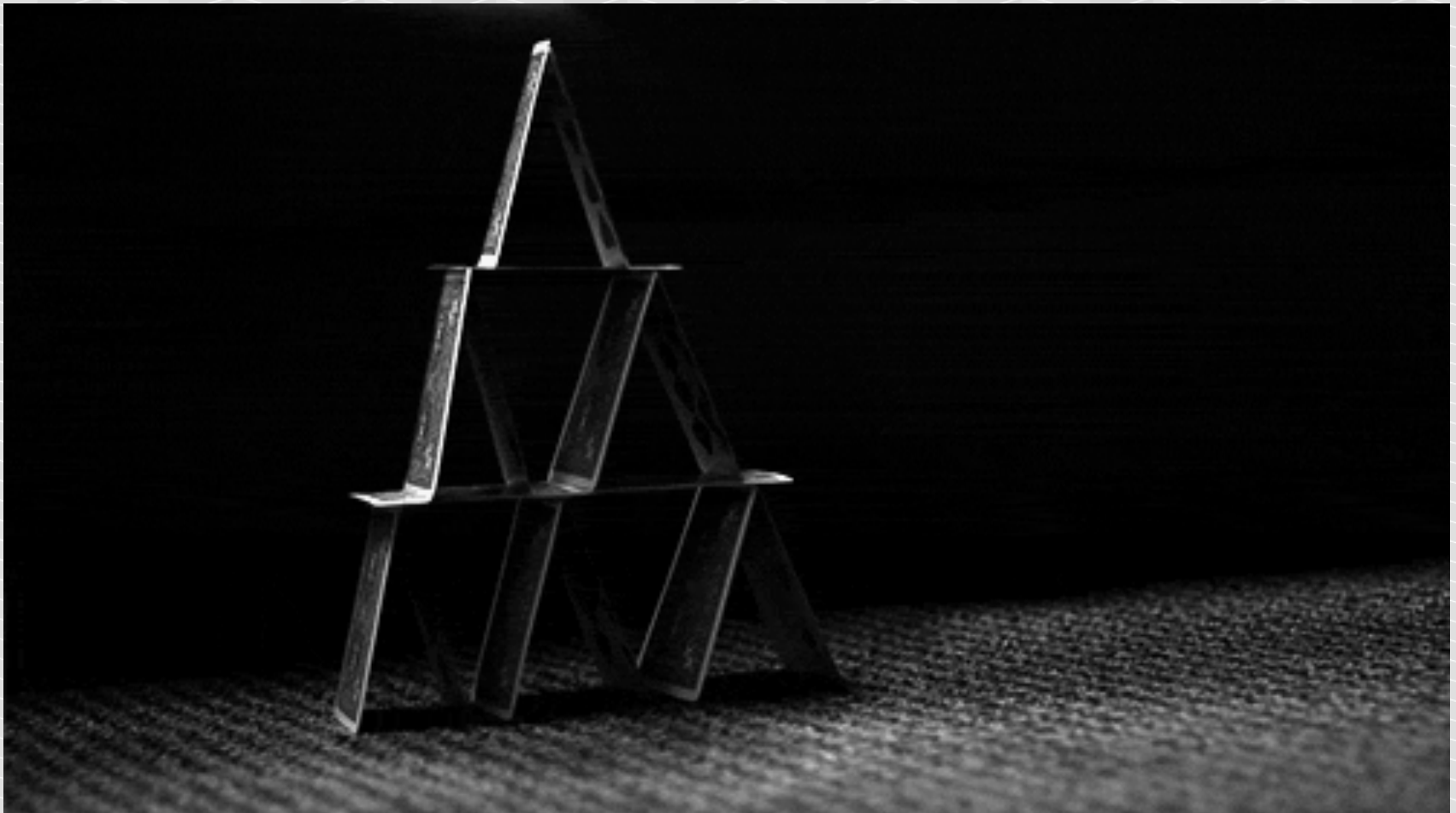
Our latest assessment:

- 32 machines, 8 cores each
- 24TB per machine
- 64 GB of RAM per machine
- Almost 1 PB disk space and 2TB of RAM



http://mrrobot.wikia.com/wiki/E_Corp

Attacker perspective



<https://plus.google.com/+Magiccardtrickszonetips>

RISK ANALYSIS

Know your threats

Risk analysis



Who?

Business perspective: competitor, script-kiddies, APT

Technical perspective:

External attacker

- Anonymous
- Ex-employee

Insider

- Employee (with some rights in Hadoop): user, admin
- Infected machine, APT

Risk analysis



Full compromise



Wojciech Dworakowski

IT Security Expert, Cwner at SecuRing, CV/ASP Poland Chapter Leader

Following

Online banking owned by single attacker

Data safety vs. data security

Security Budget

Data Protection

About $\frac{2}{3}$
used to
protect the
network



Less than $\frac{1}{3}$
used to directly
protect data and
intellectual property

Source: CSO Market Pulse Survey

For what?

Q: What will be stored? A: „We do not know what data will be stored!”

Typical bank scenario

All transaction data

All sales data

All client data



https://www.reddit.com/r/gifs/comments/37aara/calculations_intensify/

<http://thewondrous.com/julia-gunthel-worlds-most-flexible-secretary/>

Bigdata analytic says: „People who bought a dashcam are more likely to take a loan for a new car in the next month”

For what? Data theft

Forbes / Tech

FEB 16, 2012 @ 11:02 AM 2,866,944 VIEWS

How Target Figured Out A Teen Girl Was Pregnant Before Her Father Did

MNN.com > Tech > Computers

How Facebook knows when you'll get divorced (even before you do)

Facebook knows who your romantic partner is, even if you keep that information private, and can even predict if the relationship will last.

Other

Privilege escalation

- Authentication bypass

Abuse

- DoS
- Data tampering

Risk analysis



Who

How

What

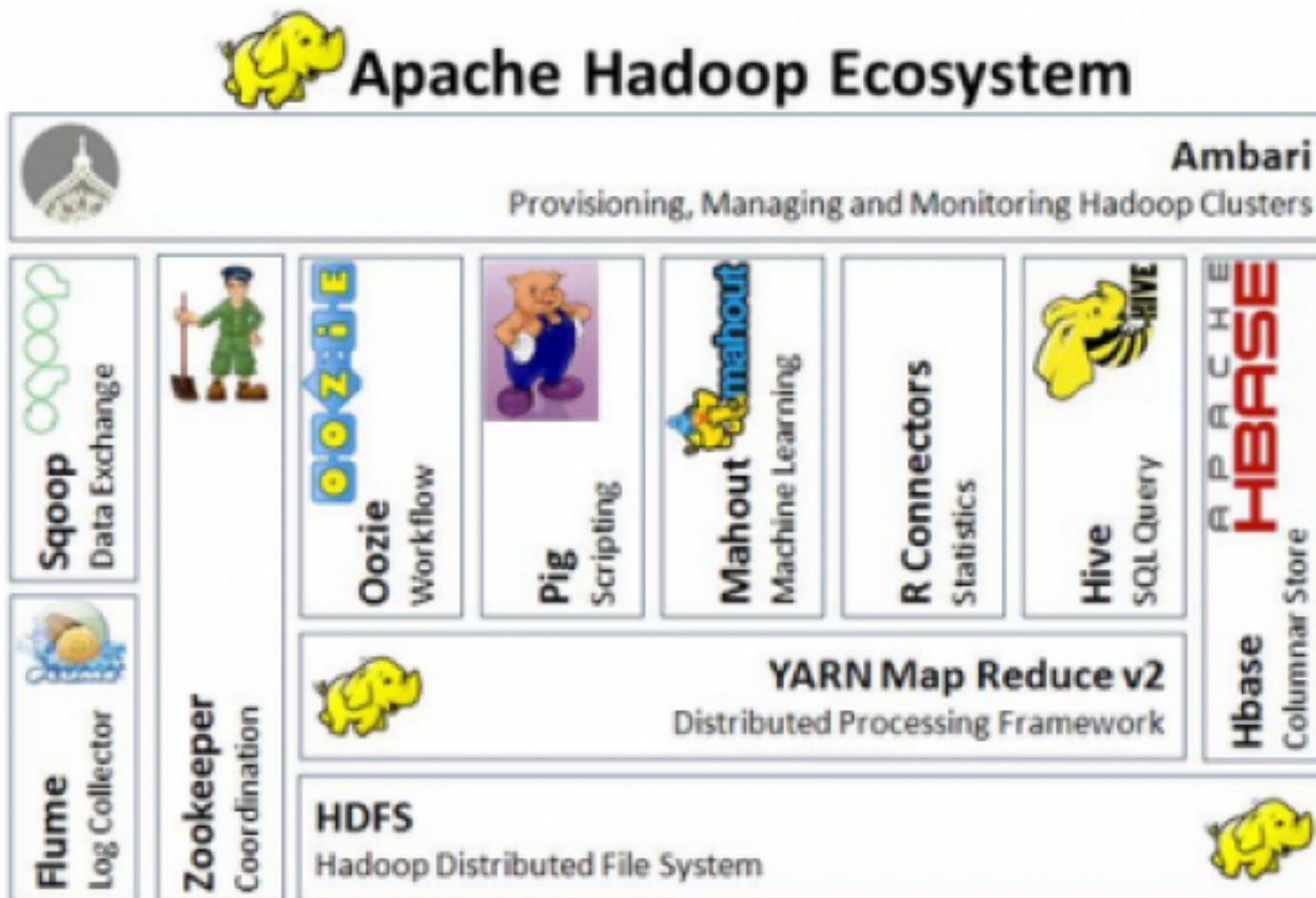
How?



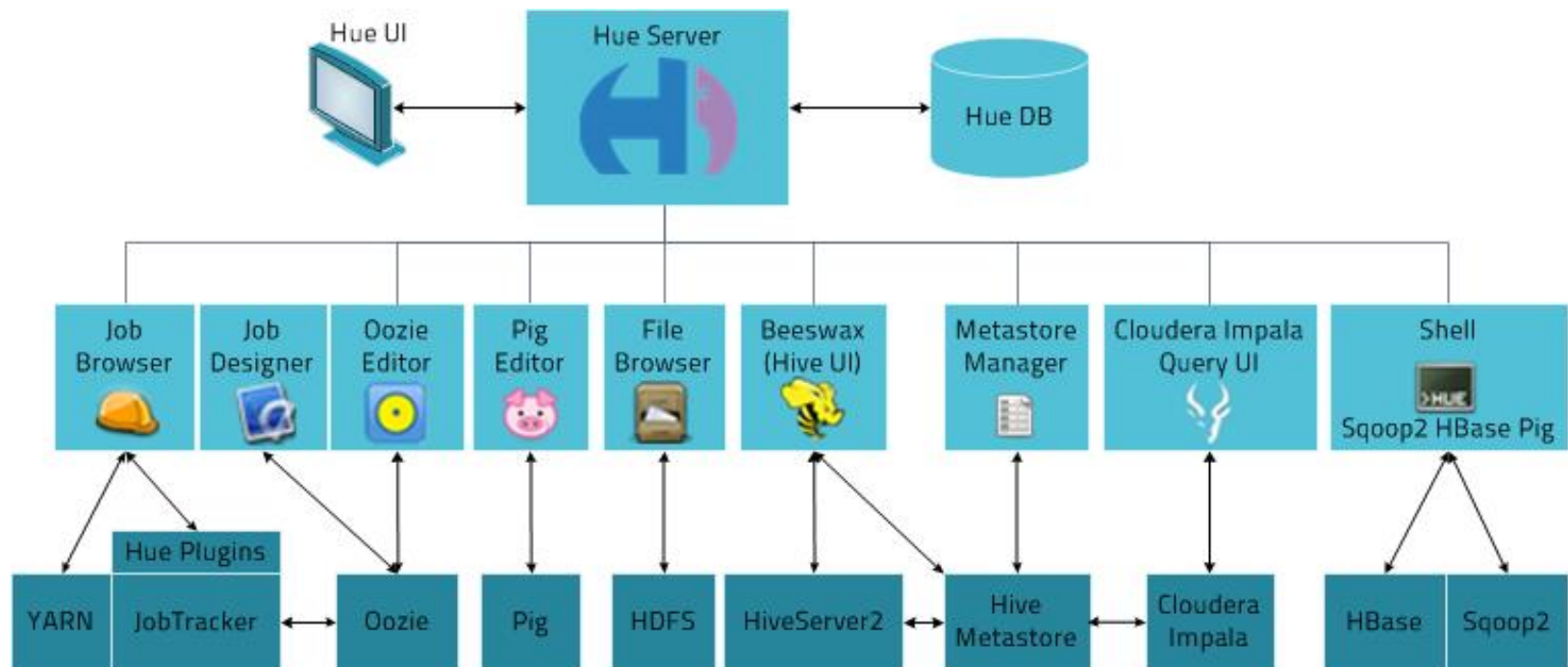
WHAT HADOOP REALLY IS

under sales-magic-cloud-big-data cover

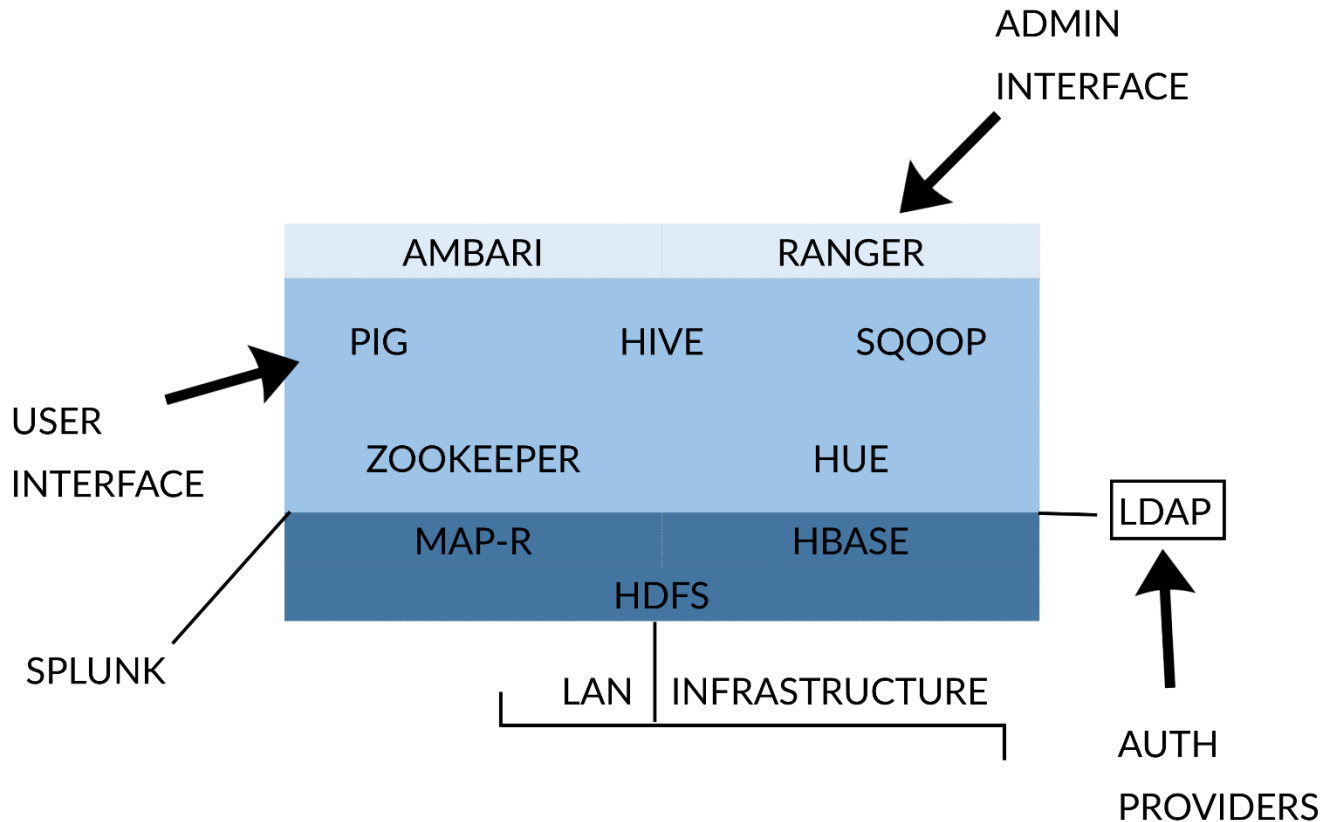
Typical architecture



Apache Hue



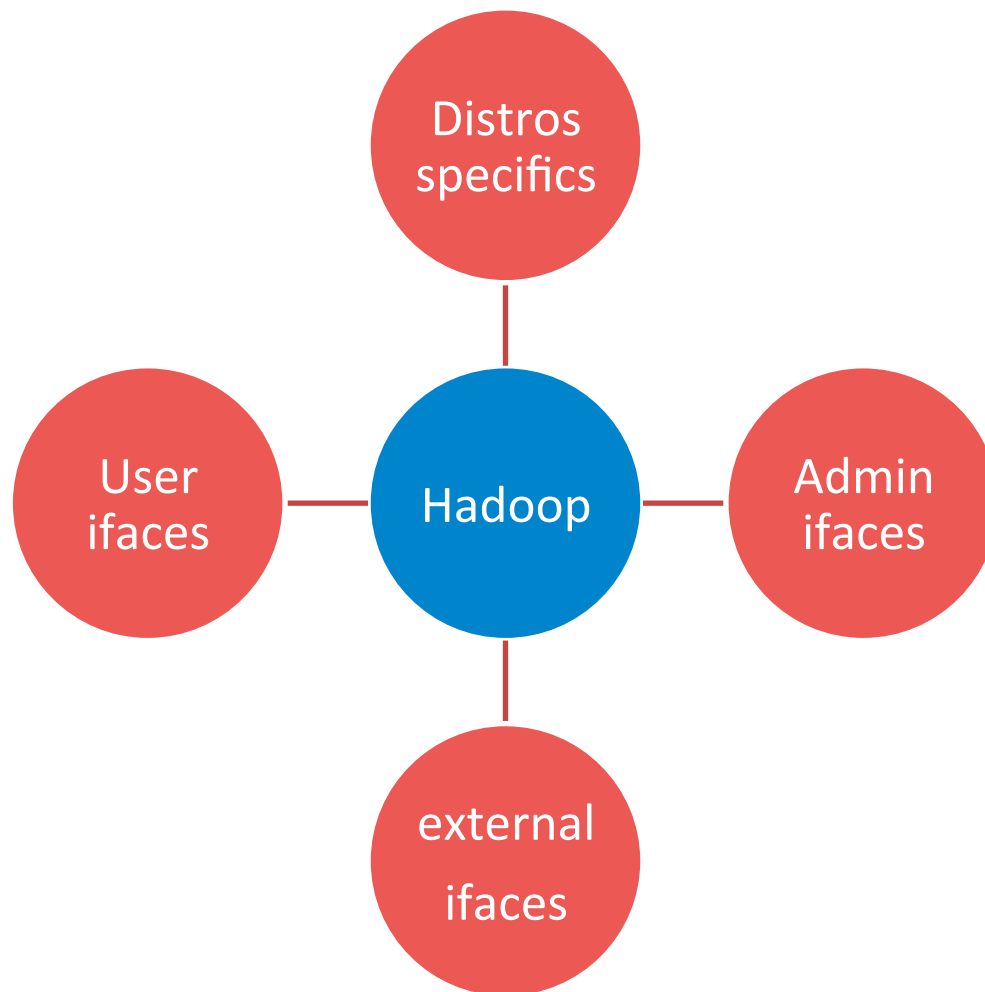
Hadoop injection points



Differs much amongst distros

INTERFACES

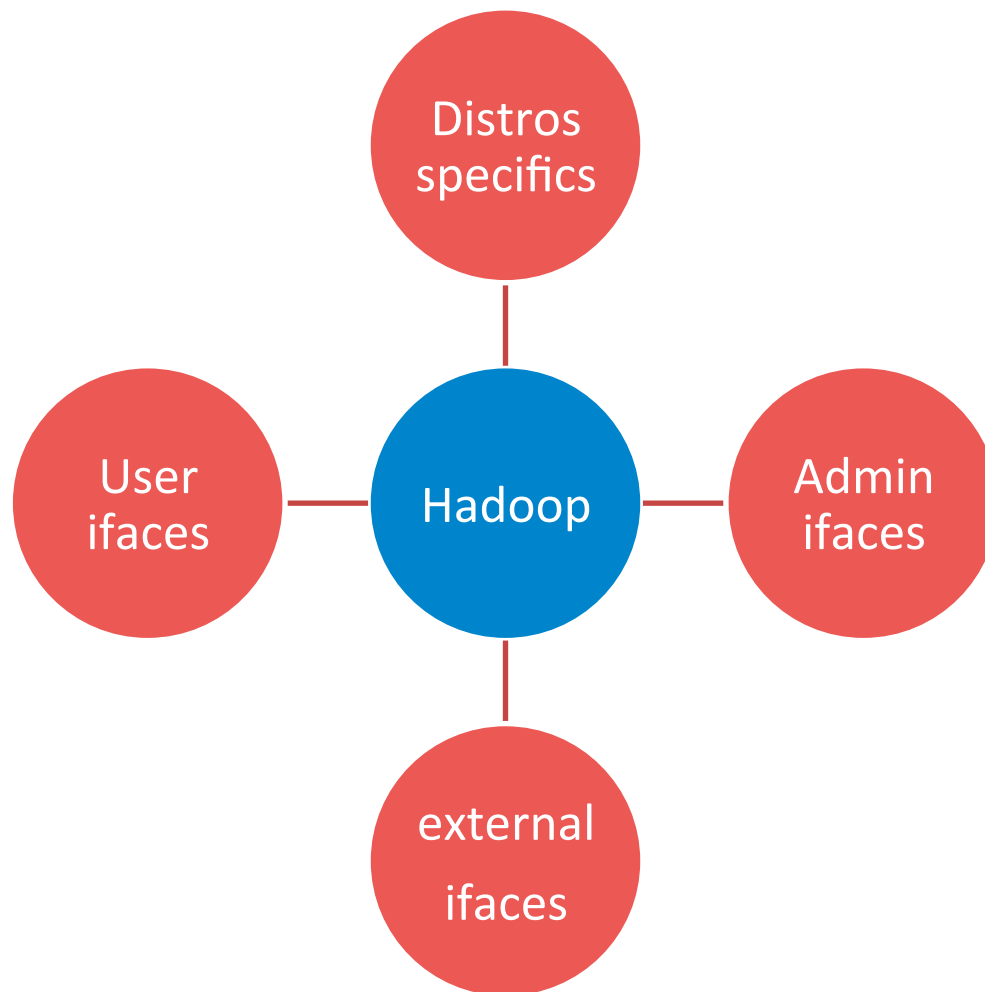
Interfaces



OUR STORY WITH BIG DATA ASSESSMENT

a.k.a crash course on hacking big data environments

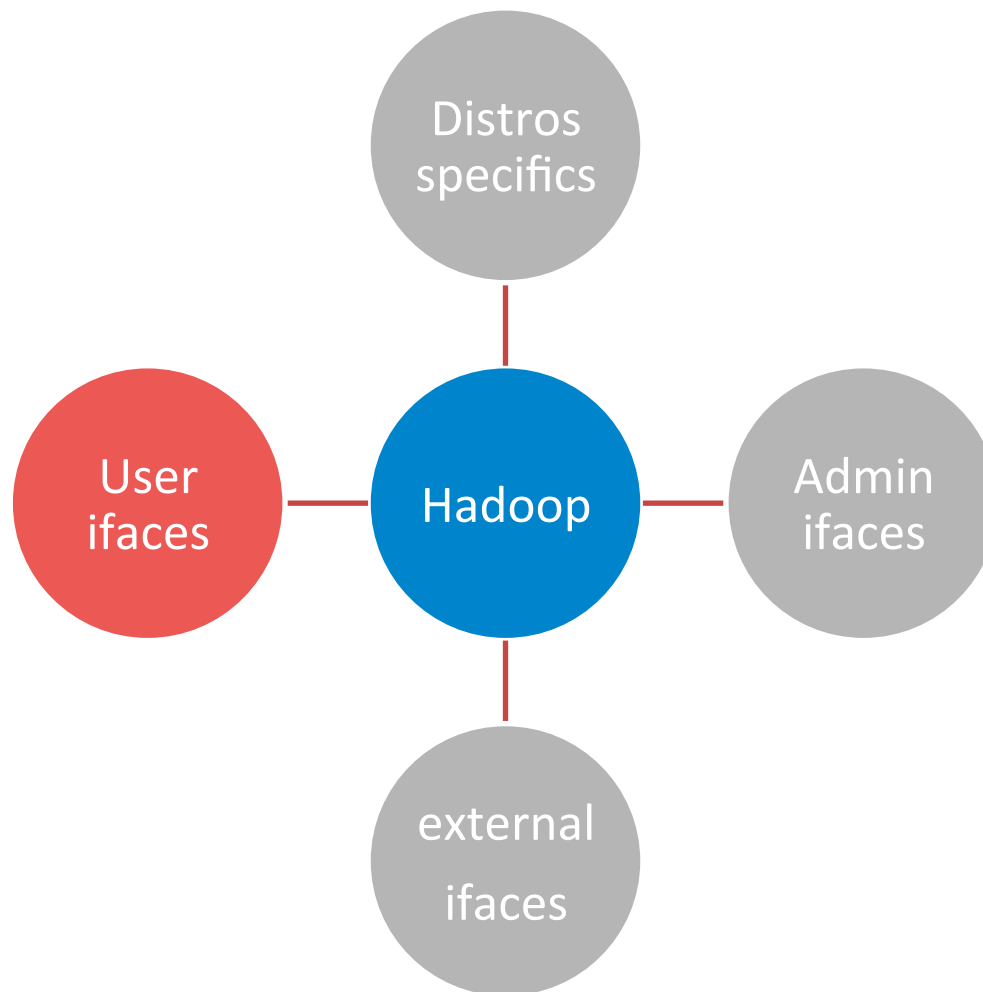
Interfaces



USER INTERFACES

for employees and applications

User interfaces



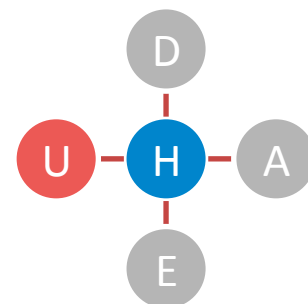
User interfaces

Apache Hue

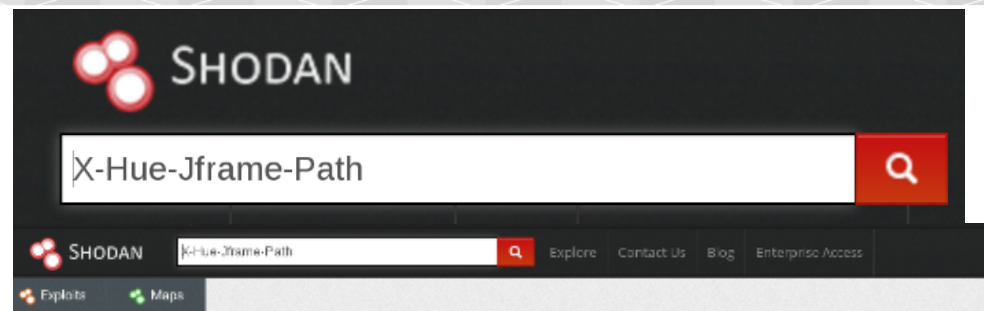
- Pig, Hive, Impala, Hbase, Zookeeper, Mahout, Oozie

Other

- Tez, Solr, Slider, Spark, Phoenix, Accumulo, Storm



Is Hue an internal interface?



TOP COUNTRIES



United States	102
France	10
Germany	9
China	7
Korea, Republic of	4

TOP SERVICES

Open	100
HTTP	98
HTTPS	10

TOP ORGANIZATIONS

Microsoft	41
Elisa Pardo Herrera and Co.	26
Microsoft Corporation	17
Amazon.com	14
Amazon	9

TOP OPERATING SYSTEMS

Linux 3.x	10
-----------	----

TOP PRODUCTS

CherryPy Wsgi	63
---------------	----

Showing results 1 - 10 of 244

84.39.38.243

ip-84-39-38-243.ec2.amazonaws.com
CloudFront S.A.S.
Added on 2015-11-23 12:09:43 GMT
France
[Details](#)

```
HTTP/1.1 200 OK
X-Hue-Jframe-Path: /
Vary: Accept-Language, Cookie
X-Frame-Options: ALLOWALL
Content-Type: text/html; charset=utf-8
Content-Language: en-us
Set-Cookie: csrfToken=6d5b374e3a43a70325
Date: Mon, 23 Nov 2015 11:58:41 GMT
Transfer-Encoding: ...
```

208.72.157.212

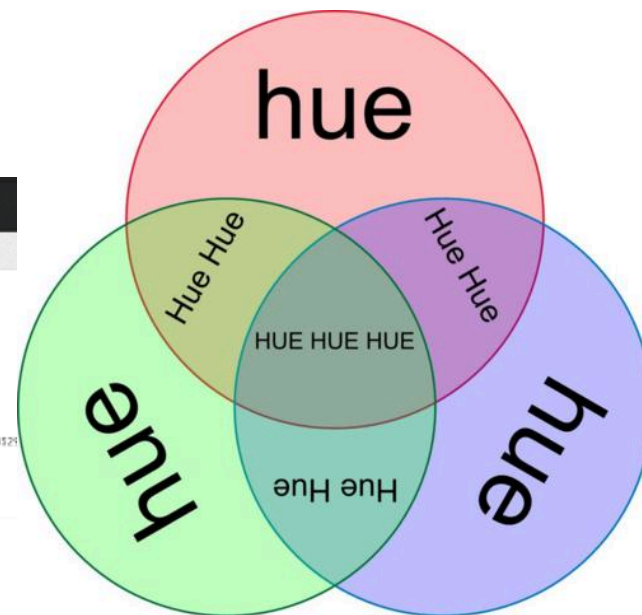
208-72-157-212.static.cloudflare.net
RE Secury, LLC
Added on 2015-11-23 12:09:43 GMT
United States, Mexico
[Details](#)

```
HTTP/1.1 200 OK
X-Hue-Jframe-Path: /
Vary: Accept-Language, Cookie
X-Frame-Options: ALLOWALL
Content-Type: text/html; charset=utf-8
Content-Language: en-us
Set-Cookie: csrfToken=7097cb26c967b9d3120a7c6c94825c5; Max-Age=31449900; Path=/
Date: Mon, 23 Nov 2015 06:26:31 GMT
Transfer-Encoding: ...
```

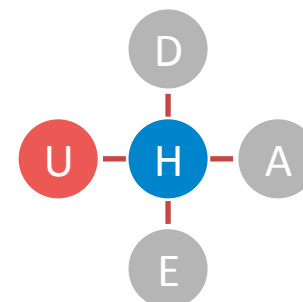
Hue

207.170.120.190
CenturyLink
Added on 2015-11-23 09:37:03 GMT
United States
[Details](#)

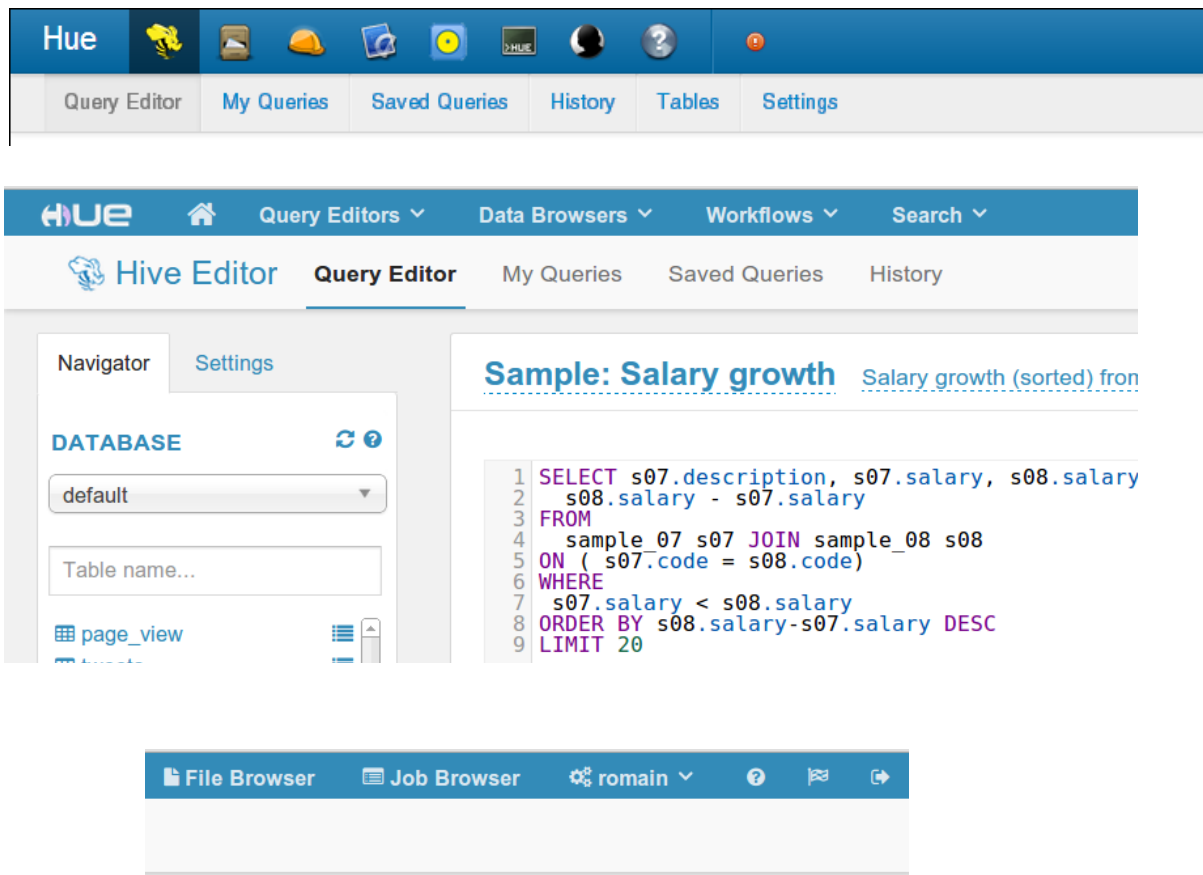
```
HTTP/1.1 200 OK
X-Hue-Jframe-Path: /
Vary: Cookie
Content-Type: text/html; charset=utf-8
Date: Mon, 23 Nov 2015 05:36:54 GMT
Transfer-Encoding: chunked
```



<http://9gag.com/gag/awrwVL1/hue-hue-hue>



Apache Hue overview



The screenshot displays the Apache Hue web interface. At the top is a blue navigation bar with the 'Hue' logo and several icons. Below this is a secondary bar with tabs: 'Query Editor', 'My Queries', 'Saved Queries', 'History', 'Tables', and 'Settings'. The main interface has a top bar with 'HUE' and a home icon, followed by dropdown menus for 'Query Editors', 'Data Browsers', 'Workflows', and 'Search'. Below this is a 'Hive Editor' section with tabs for 'Query Editor', 'My Queries', 'Saved Queries', and 'History'. The 'Query Editor' tab is active, showing a 'Navigator' on the left with a 'DATABASE' dropdown set to 'default' and a 'Table name...' input field. The main area displays a sample SQL query titled 'Sample: Salary growth' with the following code:

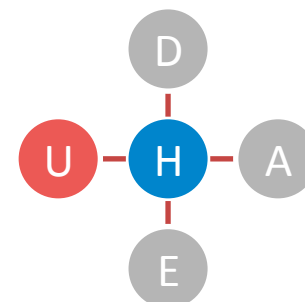
```

1 SELECT s07.description, s07.salary, s08.salary
2    s08.salary - s07.salary
3 FROM
4   sample_07 s07 JOIN sample_08 s08
5  ON ( s07.code = s08.code)
6 WHERE
7    s07.salary < s08.salary
8 ORDER BY s08.salary-s07.salary DESC
9 LIMIT 20

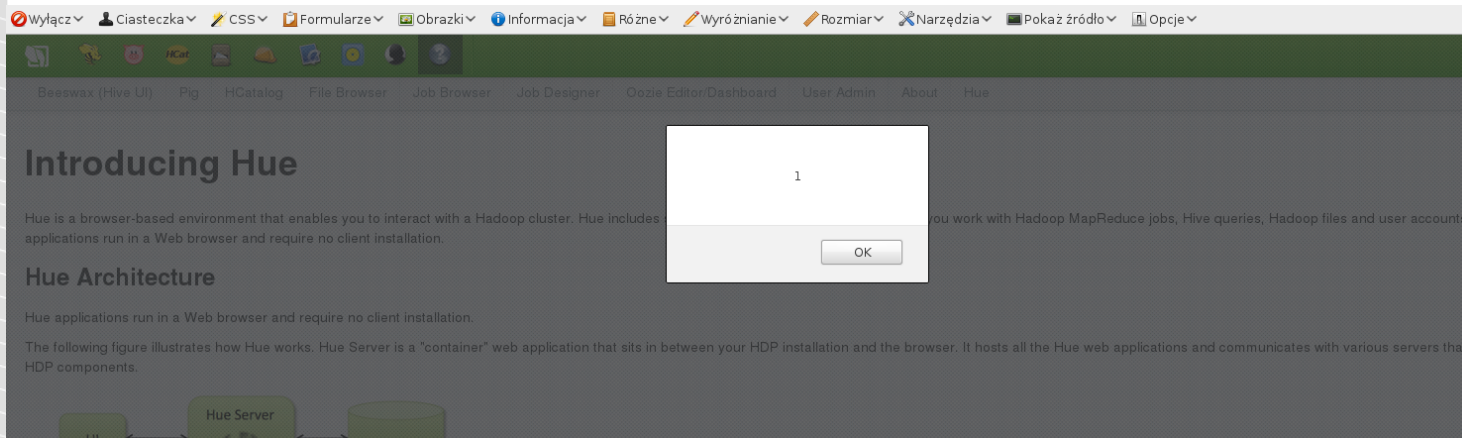
```

At the bottom of the interface is a blue bar with 'File Browser', 'Job Browser', and a user profile 'romain'.

<http://gethue.com/>

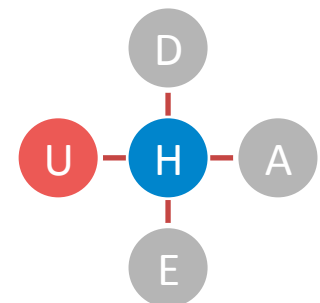


Apache Hue DOM XSS



```
var _anchor = $("a[name='" +
decodeURIComponent(window.location.hash.subs
tring(1)) + "'"").last();
```

Payload: `URL/help/#`



Apache Hue attack scenario

Target old Hadoop installation (with Hue 2.6.1, Django 1.2.3)

Target a user with access to Hue

Send him XSS

Get access to all Hadoop data designated for the user

Default configurations sucks

X-Frame-Options:ALLOWALL

```
SESSION_COOKIE_DOMAIN      None
SESSION_COOKIE_NAME        'sessionid'
SESSION_COOKIE_PATH         '/;HttpOnly'
SESSION_COOKIE_SECURE       True
SESSION_ENGINE              'django.contrib.sessions.backends.db'
SESSION_EXPIRE_AT_BROWSER_CLOSE False
SESSION_FILE_PATH           None
SESSION_SAVE_EVERY_REQUEST  False
SETTINGS_MODULE             'desktop.settings'
SHORT_DATETIME_FORMAT       'm/d/Y P'
SHORT_DATE_FORMAT           'm/d/Y'
SITE_ID                     1
SKIP_SOUTH_TESTS            True
TEMPLATE_CONTEXT_PROCESSORS ('django.contrib.auth.context_processors.auth', 'django.core.context_processors.debug',
'django.core.context_processors.media', 'django.contrib.messages.context_processors.messages')

TEMPLATE_DEBUG              False
TEMPLATE_DIRS               ('/usr/lib/hue/desktop/core/templates',)
TEMPLATE_LOADERS            ('django.template.loaders.filesystem.load_template_source', 'desktop.lib.template_loader')
TEMPLATE_STRING_IF_INVALID  ''
TEST_DATABASE_CHARSET       None
TEST_DATABASE_COLLATION     None
TEST_DATABASE_NAME          None
TEST_RUNNER                 'django.test.simple.DjangoTestSuiteRunner'
THOUSAND_SEPARATOR          ','
TIME_FORMAT                 'p'
TIME_INPUT_FORMATS          ('%H:%M:%S', '%H:%M')
TIME_ZONE                   'America/Los_Angeles'
TRANSACTIONS_MANAGED        False
URL_VALIDATOR_USER_AGENT    'Django/1.2.3 (http://www.djangoproject.com)'
USE_ETAGS                   False
USE_I18N                    True
USE_L10N                    True
USE_THOUSAND_SEPARATOR      False
X_FRAME_OPTIONS             'ALLOWALL'
YEAR_MONTH_FORMAT           'F Y'
```

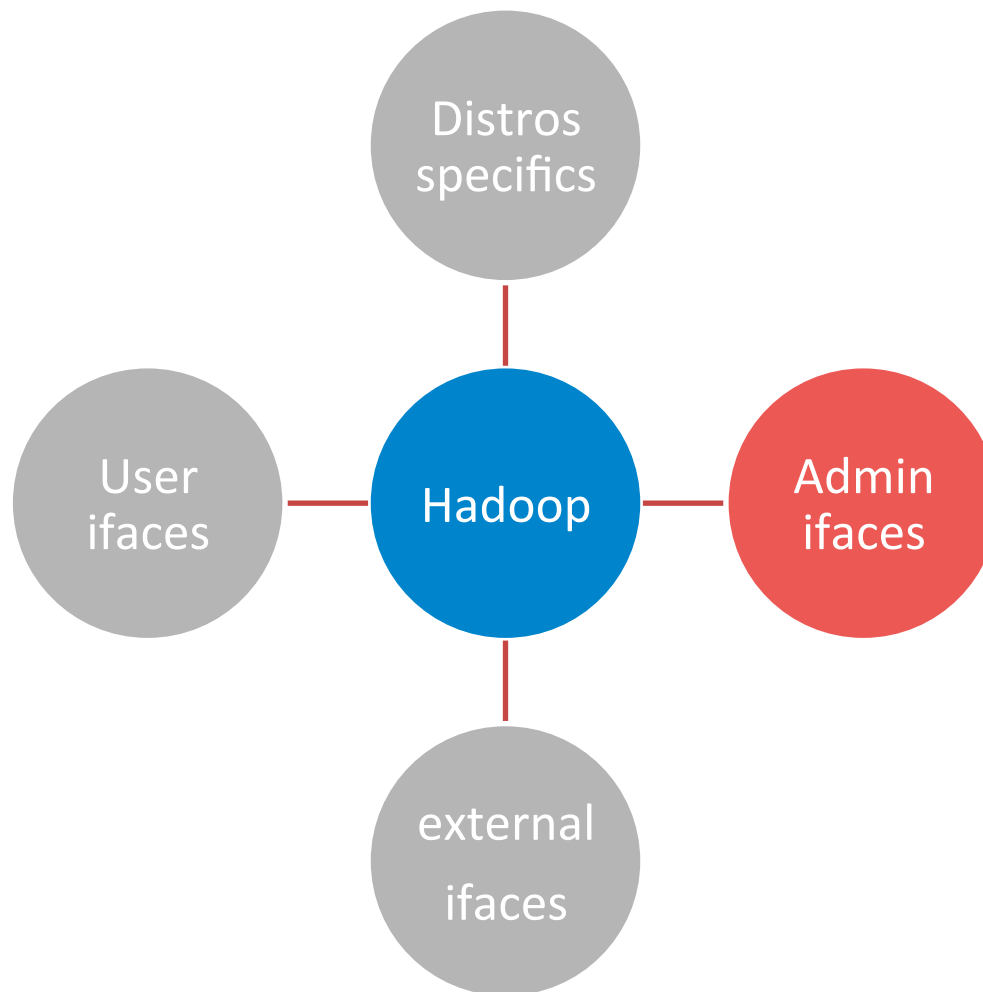


You're seeing this error because you have `DEBUG = True` in your Django settings file. Change that to False, and Django will display a standard 500 page.

ADMIN INTERFACES

for admins and maintenance

Admin interfaces



Admin interfaces

Apache Ambari

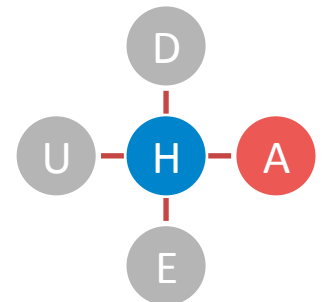
- Provisioning, monitoring

Apache Ranger

- Security: authorization, authentication, auditing, data encryption, administration

Other

- Knox, Cloudbreak, Zookeeper, Falcon, Atlas, Sqoop, Flume, Kafka

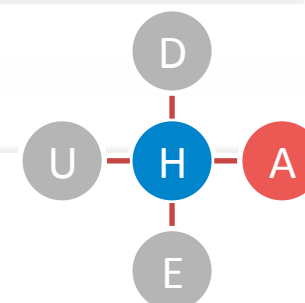


Apache Ambari

Trochę o Ambari

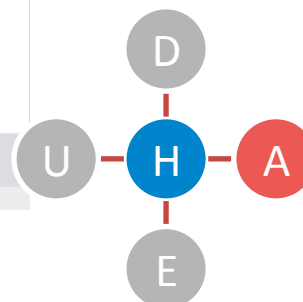
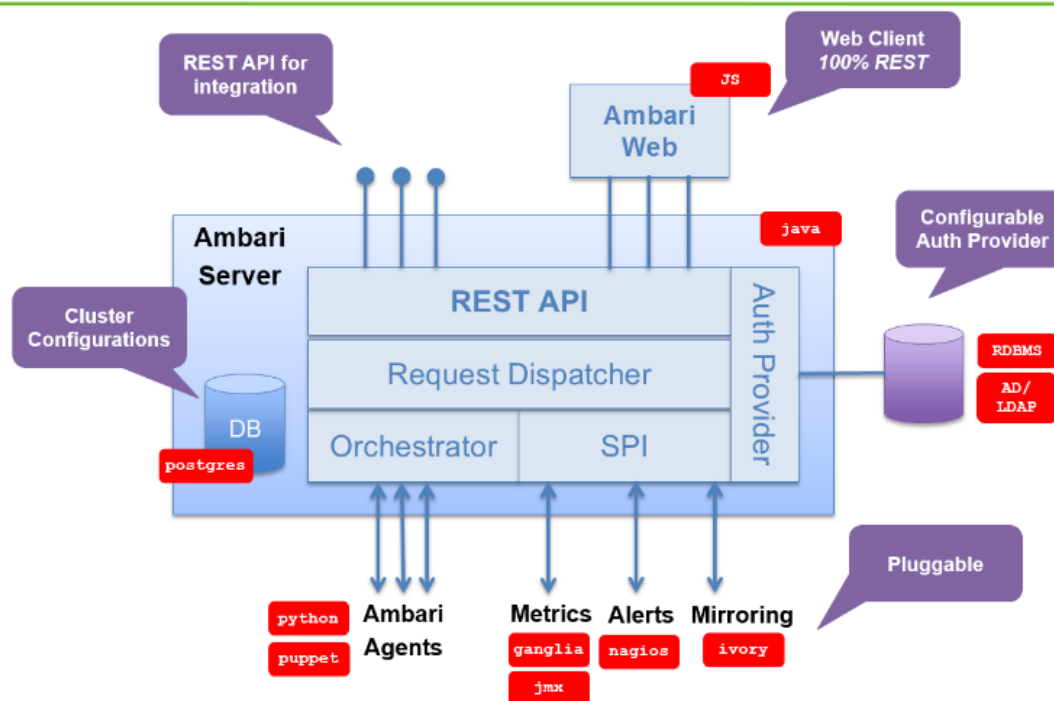
Feature	Benefit
Wizard-driven interface	Facilitates installation of Hadoop across any number of hosts
API-driven installations	Ambari Blueprints for automated provisioning
Granular service control	Precise management of Hadoop services and component lifecycles
Configuration change history	Ongoing management of Hadoop service configurations
RESTful APIs	Enables integration with enterprise systems
Extensible framework	Brings custom services under management via Ambari Stacks
Customizable user interface	Develop innovative user experiences via Ambari Views Framework
User Views	Advanced capabilities for cluster optimization and tuning for Hadoop DevOps

http://www.slideshare.net/hortonworks/ambari-using-a-local-repository?next_slideshow=1

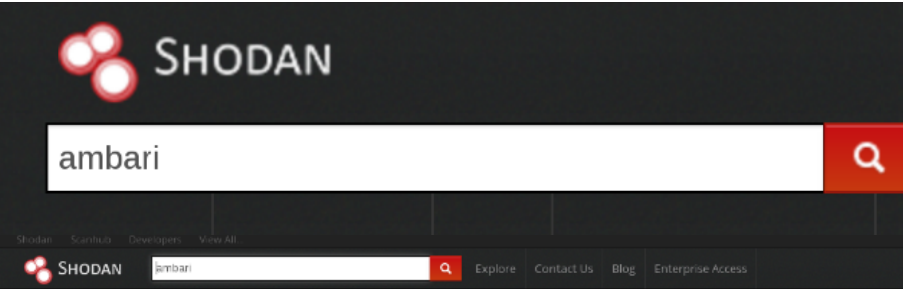


Apache Ambari

Architecture



Is Ambari an internal interface?



SHODAN

ambari

Exploits Maps

Showing results 1 - 10 of 36

302 Found

HTTP/1.1 302 Found

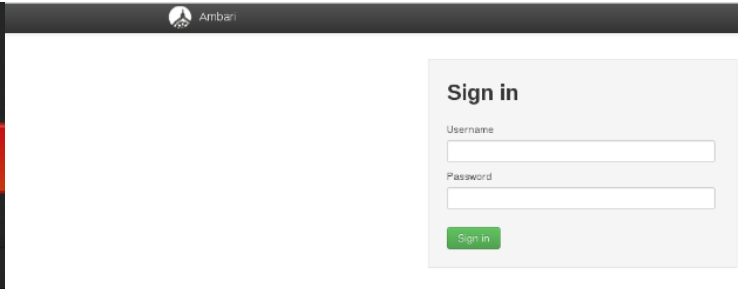
Date: Mon, 23 Nov 2015 09:29:59 GMT

Server: Apache/2.2.15 (CentOS)

Location: https://ambari-5d2d823588e92632f5a68ce05f13260.cloudbigdataplatfom.com/

Content-Length: 332

Content-Type: text/html; charset=iso-8859-1



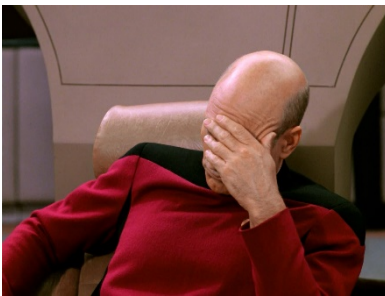
Ambari

Sign in

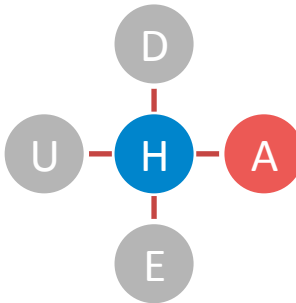
Username

Password

Sign in

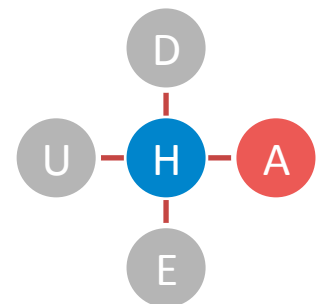


<http://knowyourmeme.com/memes/facepalm>



Apache Ambari

- Standard users can sign into Ambari (WHY?)
- Low hanging fruits: directory listing by default, no cookie flags, no CSRF protection
- Interesting proxy script ->



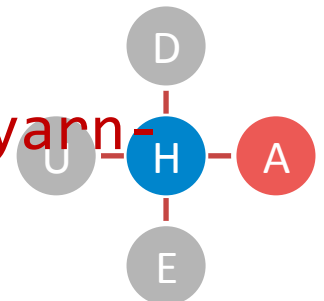
Apache Ambari REST API proxy

Standard request:

```
/proxy?url=http://XXXXXXXXX:8188/ws/v1/
timeline/HIVE_QUERY_ID?
limit=1&secondaryFilter=tez:true&_=142418001
```

6625
Tampered request (logs accessible only from DMZ):

```
/proxy?url=http://google.com
/proxy?url=http://XXXXXXXX:8088/logs
/proxy?url=http://XXXXXXXX:8088/logs/yarn-
yarn-resourcemanager-XXXXXXXXX.log
```



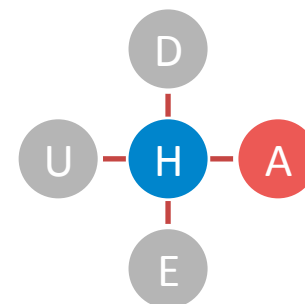
Apache Ambari Server Side Request Forgery

Directory: /logs/

hadoop-mapreduce.jobsummary.log	137797 bytes	Jan 22, 2015 6:18:54 PM
yarn-yarn-historyserver- _log	3866624 bytes	Feb 16, 2015 11:23:02 AM
yarn-yarn-historyserver- _out	4096 bytes	Feb 14, 2015 2:08:00 PM
yarn-yarn-historyserver- _out.1	828 bytes	Dec 10, 2014 11:51:13 AM
yarn-yarn-historyserver- _out.2	828 bytes	Dec 10, 2014 11:44:31 AM
yarn-yarn-historyserver- _out.3	828 bytes	Dec 10, 2014 10:55:43 AM
yarn-yarn-resourcemanager- _log	19779584 bytes	Feb 16, 2015 11:24:22 AM
yarn-yarn-resourcemanager- _out	171856 bytes	Feb 15, 2015 1:25:50 PM
yarn-yarn-resourcemanager- _out.1	2192 bytes	Dec 10, 2014 12:46:05 PM
yarn-yarn-resourcemanager- _out.2	2086 bytes	Dec 10, 2014 11:46:30 AM
yarn-yarn-resourcemanager- _out.3	2086 bytes	Dec 10, 2014 11:00:48 AM



CVE-2015-1775



Apache Ambari attack scenario

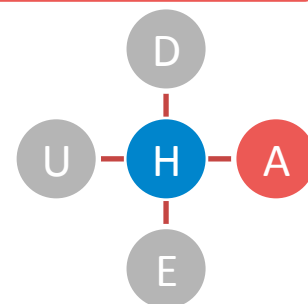
Target old Hadoop installation with Ambari 1.5.0 to 2.0.2

Hijack standard account (or use Hue XSS to perform CSRF)

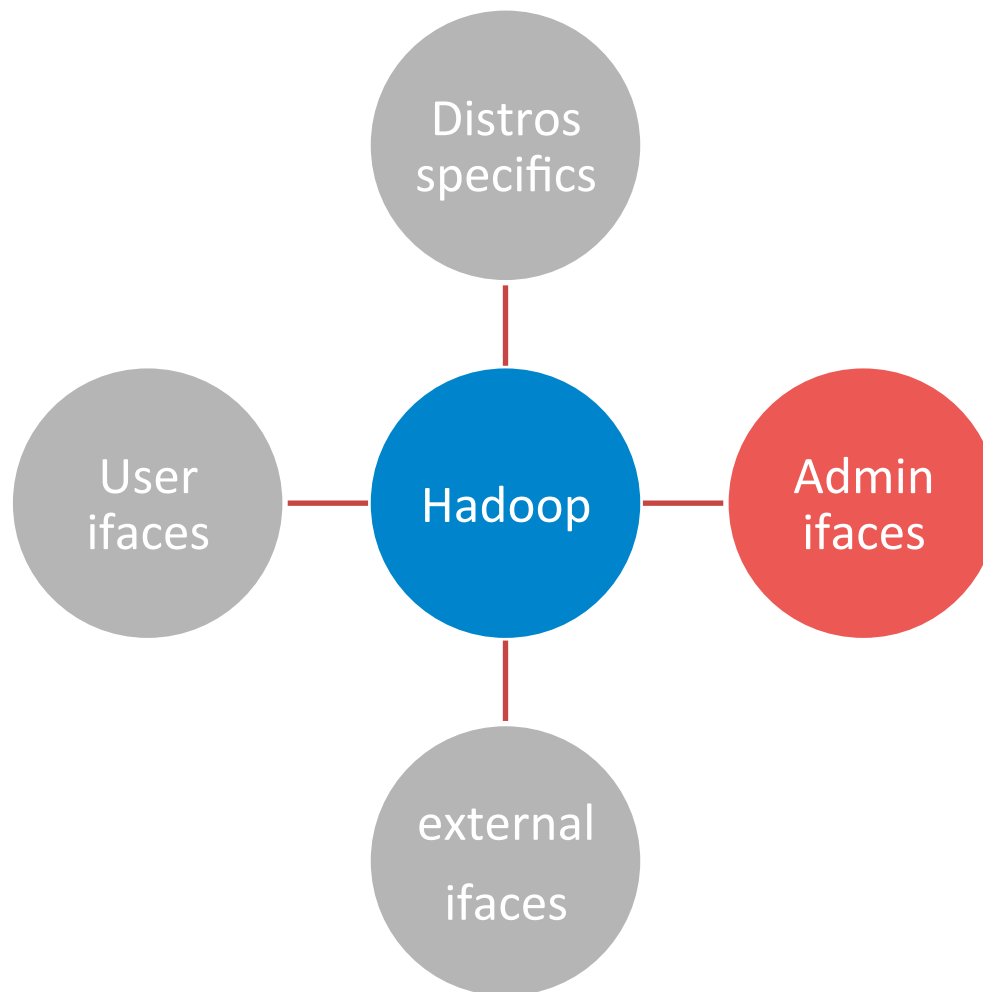
Log into Ambari, use CVE-2015-1775

Get access to local network (DMZ) – HTTP only

Download logs, exploit other Hadoop servers in DMZ



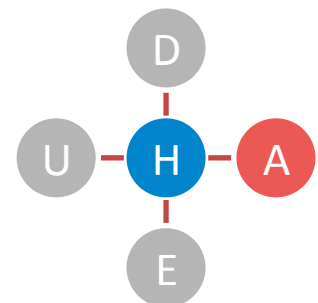
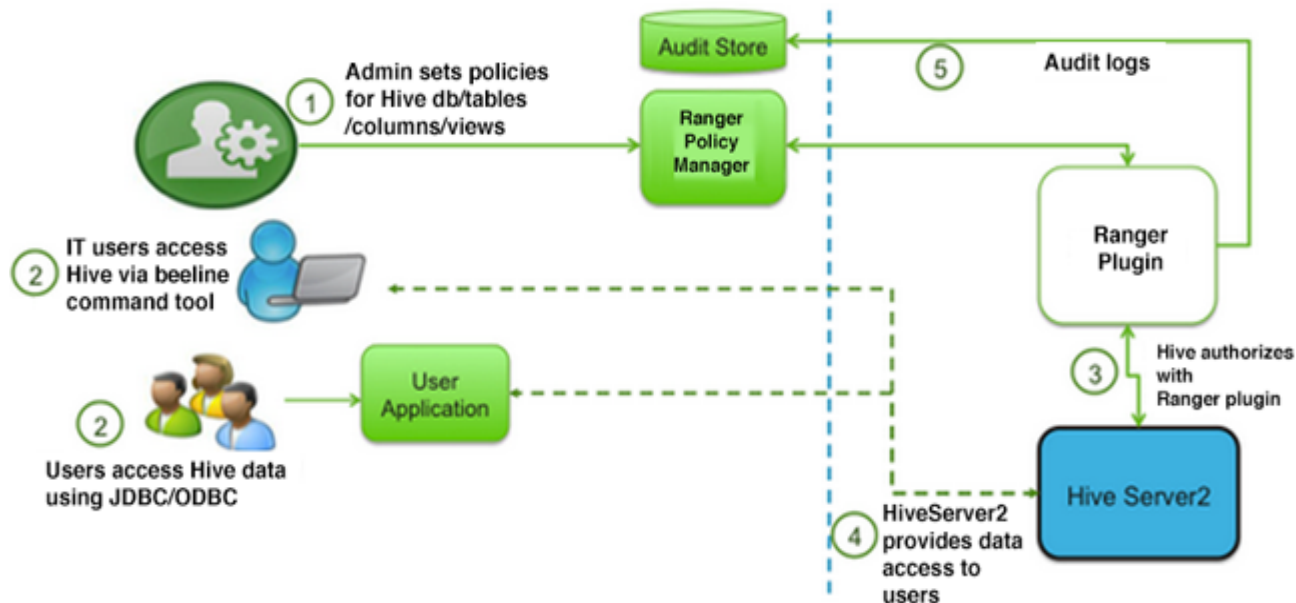
Admin interfaces



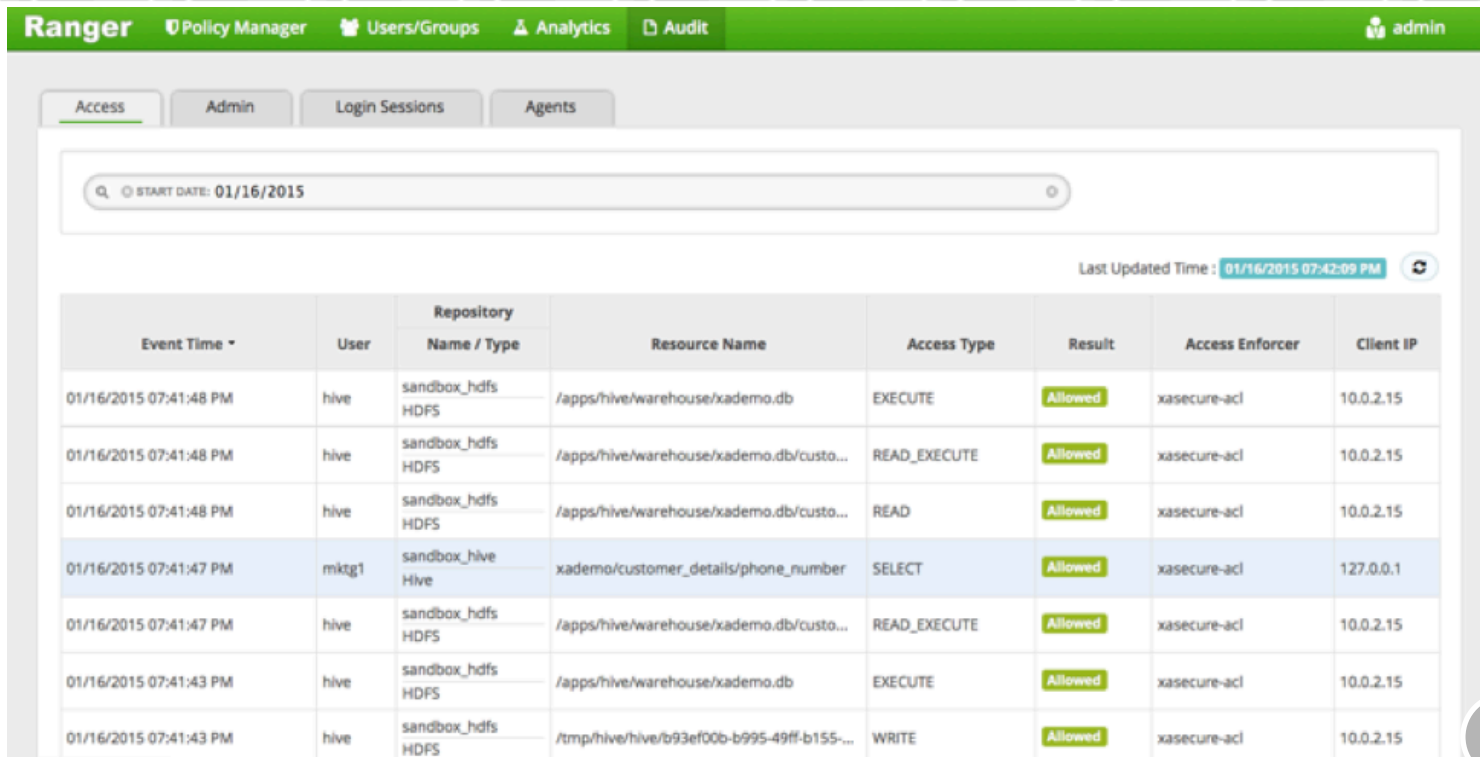
Apache Ranger overview

Previously: Apache Argus, XA-Secure

Provides central administration for policies, users/ groups. analytics and audit data.



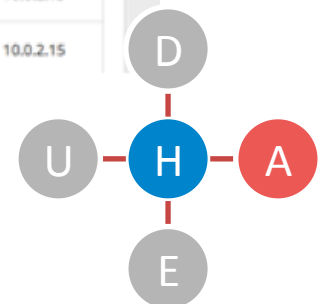
Apache Ranger overview



The screenshot shows the Apache Ranger Policy Manager interface. The top navigation bar includes links for Policy Manager, Users/Groups, Analytics, and Audit. The 'Access' tab is selected, displaying a table of recent access events. The table columns are Event Time, User, Repository Name / Type, Resource Name, Access Type, Result, Access Enforcer, and Client IP. The events show various operations like EXECUTE, READ_EXECUTE, READ, and SELECT on different resources, all resulting in 'Allowed' status.

Event Time	User	Repository Name / Type	Resource Name	Access Type	Result	Access Enforcer	Client IP
01/16/2015 07:41:48 PM	hive	sandbox_hdfs HDFS	/apps/hive/warehouse/xademo.db	EXECUTE	Allowed	xasecure-acl	10.0.2.15
01/16/2015 07:41:48 PM	hive	sandbox_hdfs HDFS	/apps/hive/warehouse/xademo.db/custo...	READ_EXECUTE	Allowed	xasecure-acl	10.0.2.15
01/16/2015 07:41:48 PM	hive	sandbox_hdfs HDFS	/apps/hive/warehouse/xademo.db/custo...	READ	Allowed	xasecure-acl	10.0.2.15
01/16/2015 07:41:47 PM	mktg1	sandbox_hive Hive	xademo/customer_details/phone_number	SELECT	Allowed	xasecure-acl	127.0.0.1
01/16/2015 07:41:47 PM	hive	sandbox_hdfs HDFS	/apps/hive/warehouse/xademo.db/custo...	READ_EXECUTE	Allowed	xasecure-acl	10.0.2.15
01/16/2015 07:41:43 PM	hive	sandbox_hdfs HDFS	/apps/hive/warehouse/xademo.db	EXECUTE	Allowed	xasecure-acl	10.0.2.15
01/16/2015 07:41:43 PM	hive	sandbox_hdfs HDFS	/tmp/hive/hive/b93ef00b-b995-49ff-b155-...	WRITE	Allowed	xasecure-acl	10.0.2.15

<http://hortonworks.com/blog/best-practices-for-hive-authorization-using-apache-ranger-in-hdp-2-2/>



Apache Ranger

- Low hanging fruits: no HTTP hardening, SlowHTTP DoS
- Standard users can log into Ranger but have no permissions
- Interesting function level access control ->

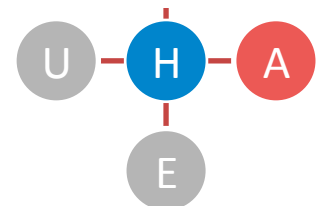
Apache Ranger vulnerabilities

```

Ranger Policy Manager Users/Groups Analytics Audit admin
Access Admin Login Sessions Agents

<a href="#!/policymanager" id="nav2"><i class="icon-shield"></i>{{tt 'h.policyManager'}} </a>
</li>
{{#isSystemAdmin .}}
<li>
<a href="#!/users/usertab" id="nav3"><i class="icon-group"></i> {{tt 'h.usersOrGroups'}} </a>
</li>
{{/isSystemAdmin}}
<li>
<a href="#!/reports/userAccess" id="nav7"><i class="icon-beaker"></i> {{tt 'h.analytics'}} </a>
</li>
{{#isSystemAdmin .}}
<li>
<a href="#!/reports/audit/bigData" id="nav8"><i class="icon-file-alt"></i> {{tt 'h.audit'}} </a>
</li>
{{/isSystemAdmin}}

```

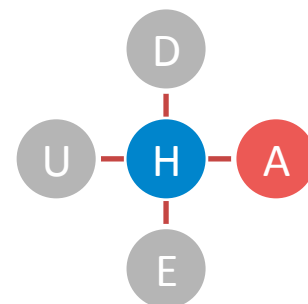


Missing function level access control

- Audit (X)
 - Big Data (X)
 - Admin (V)
 - Login Sessions (X)
 - Sessoin details (X)
 - Show actions (V)
- Users/Group (X)
 - Add new user (V)
 - List (X)
 - List (X)
 - Edit (V)
- Policies/Analytics (V)
 - List (V)
 - Edit (X)
 - Save changes (V)
 - Details (X)
 - Delete (X)



CVE-2015-0266



Apache Ranger attack scenario

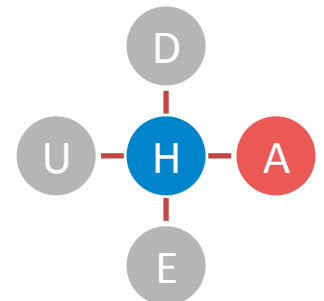
Target an old Hadoop installation (Apache Ranger 0.4 or XA-Secure v. 3.5.001)

Hijack standard Hadoop account

Log into Ranger (with low permissions)

Use CVE-2015-0266 to escalate privileges

Edit accounts, authorization rules, access policies



Apache Ranger vulnerabilities

Ranger Access Manager Audit Settings admin

Access Admin Login Sessions Plugins

SEARCH FILTER FOR SESSION

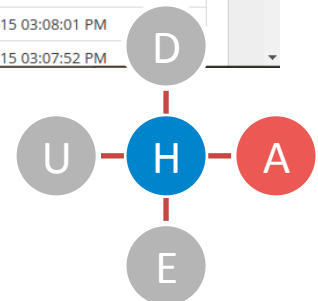
Search for your login sessions...

Last Updated Time : 07/31/2015 06:53:48 PM

CLICK O SESSION ID

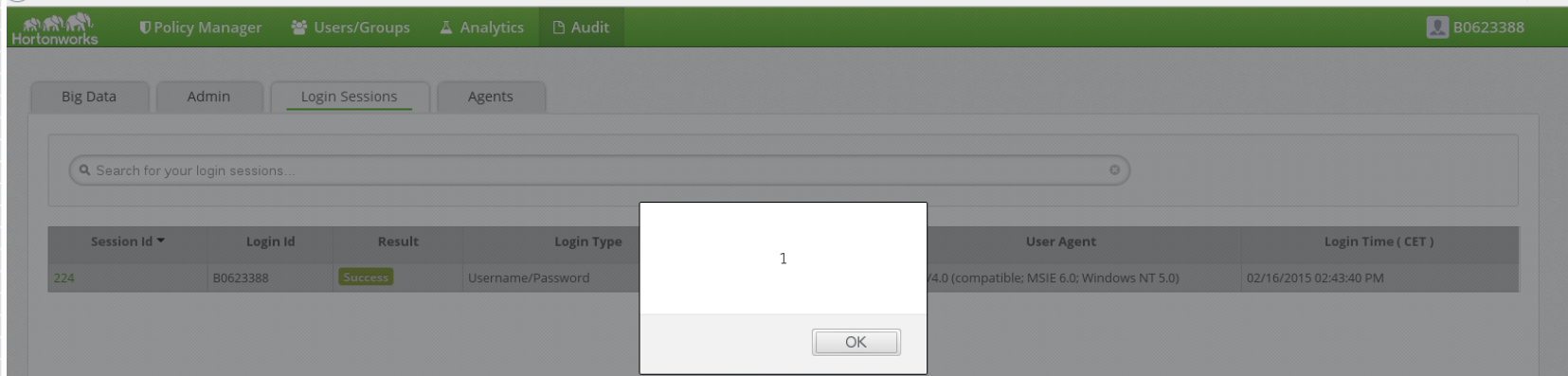
Session Id	Login Id	Result	Login Type	IP	User Agent	Login Time (IST)
31	admin	Success	Username/Password	127.0.0.1	Mozilla/5.0 (X11; Linux x86_64) AppleWebKit...	07/31/2015 06:40:16 PM
30	Brett	Success	Username/Password	127.0.0.1	Mozilla/5.0 (X11; Linux x86_64) AppleWebKit...	07/31/2015 05:18:19 PM
29	admin	Success	Username/Password	127.0.0.1	Mozilla/5.0 (X11; Linux x86_64) AppleWebKit...	07/31/2015 05:17:27 PM
28	steve	Wrong Password	Username/Password	127.0.0.1	--	07/31/2015 05:17:22 PM
27	admin	Success	Username/Password	127.0.0.1	Mozilla/5.0 (X11; Linux x86_64) AppleWebKit...	07/31/2015 05:11:54 PM
26	steve	Wrong Password	Username/Password	127.0.0.1	--	07/31/2015 05:09:00 PM
25	admin	Success	Username/Password	127.0.0.1	Mozilla/5.0 (X11; Linux x86_64) AppleWebKit...	07/31/2015 05:08:37 PM
24	mark	Wrong Password	Username/Password	127.0.0.1	--	07/31/2015 05:08:22 PM
23	mark	Wrong Password	Username/Password	127.0.0.1	--	07/31/2015 05:08:07 PM
22	admin	Success	Username/Password	127.0.0.1	Mozilla/5.0 (X11; Linux x86_64) AppleWebKit...	07/31/2015 03:24:28 PM
21	keyadmin	Success	Username/Password	127.0.0.1	Mozilla/5.0 (X11; Linux x86_64) AppleWebKit...	07/31/2015 03:08:01 PM
20	keyadmin	Wrong Password	Username/Password	127.0.0.1	--	07/31/2015 03:07:52 PM

<https://cwiki.apache.org/confluence/display/RANGER/Ranger+0.5+-+User+Guide>



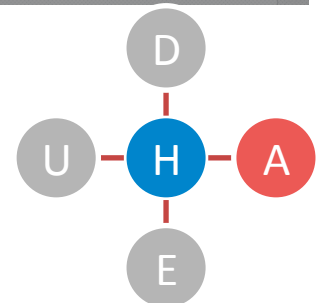
Apache Ranger XSS through UserAgent

```
User-Agent: Mozilla/4.0 (compatible; MSIE 6.0; Windows NT 5.0) <script>alert(1);</script>
```



PWNED!

CVE-2015-0265



Apache Ranger attack scenario

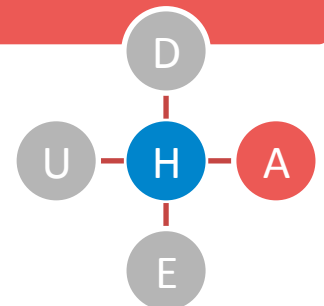
Target an old Hadoop installation (Apache Ranger 0.4 or XA-Secure v. 3.5.001)

Network access to Apache Ranger is necessary (either from the internet or local network)

Log in with any user and password using XSS in UserAgent

You don't need to escalate privileges, you're already an admin (after admin opens session tab)


Deploy BEEF or whatsoever (CSRF script) to create users and change policies



Apache Ranger patched

- Affected version: Apache Ranger v 0.4.0, XA Secure v. 3.5.001
- Both vulnerabilities patched in Ranger v 0.5.0
- For a while developers did a self-full-disclosure ->



RANGER-284 in public Jira now


Ranger / RANGER-284

Replace "Agents" with "Plugins" in Ranger Admin UI


Agile Board
Export

Details


Type:	 Bug	Status:	RESOLVED
Priority:	 Major	Resolution:	Fixed
Affects Version/s:	0.4.0	Fix Version/s:	0.5.0
Component/s:	None		
Labels:	None		

People


Assignee:

 Gautam Borad


Reporter:

 Gautam Borad

Votes:

 0 Vote for this issue

Watchers:

 1 Start watching this issue

Description

Review all references to "Agent" in the UI templates and replace them with "Plugin". For Eg :

Page: Audit==>Agents:

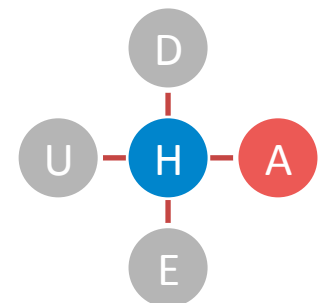
Search text: "Search for your agents.."

Search fields: "Agent Id", "Agent IP"

Columns: "Agent Id", "Agent IP"

Dates

Created:

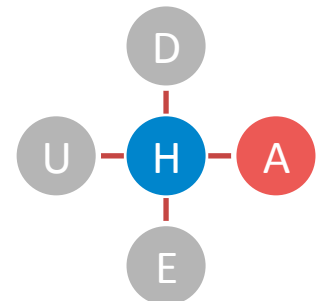


RANGER-284 shortly after vendor contact

Gautam Borad updated RANGER-284:

Attachment: RANGER-284-Escape-HTML-before-displaying-to-prevent-.patch

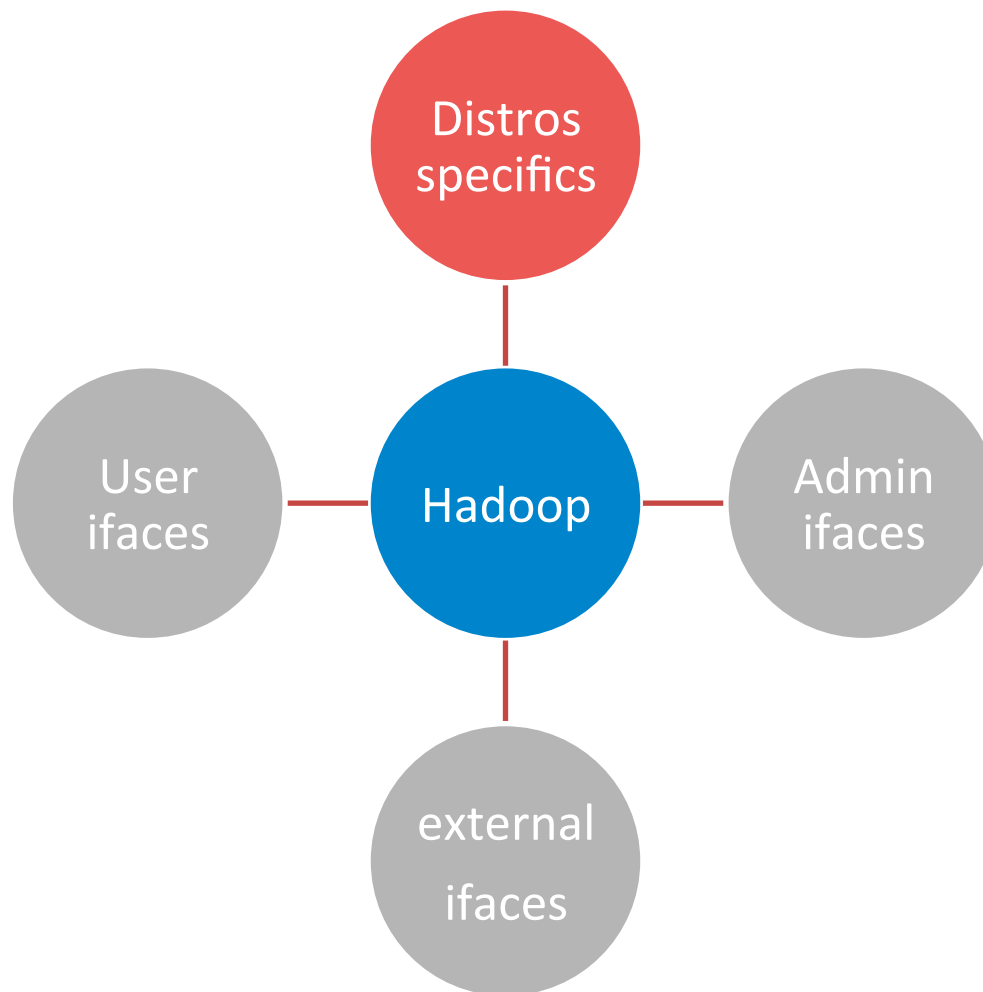
```
> Sanitize User Data to prevent XSS - Security Vulnerability
> -----
>
> Key: RANGER-284
> URL: https://issues.apache.org/jira/browse/RANGER-284
> Project: Ranger
> Issue Type: Bug
> Affects Versions: 0.4.0
> Reporter: Gautam Borad
> Assignee: Gautam Borad
> Fix For: 0.5.0
>
> Attachments: RANGER-284-Escape-HTML-before-displaying-to-prevent-.patch
>
> *Steps to reproduce*
> * Set user agent to something like this - "Mozilla/4.0 (compatible; MSIE 6.0; Windows
NT 5.0) <script>alert(1);</script>"
> * Try to login to policy admin with an incorrect username/password
> * Now login as admin user
> * Go to Audit tab --> Login Sessions
> * You will notice the failed logins displayed
> * Click on the failed login session id
> * Click Login sessions
> * You will notice a Javascript popup alert (entered in the user agent)
> *Expected Result*
> Unauthorized users should not be able to change the behavior of the application
> *Actual Result*
> Unauthorized users are able to put javascript code that can be executed in admin users
context
> *Fix*
> Sanitize the user input data and any data comes from user.
```



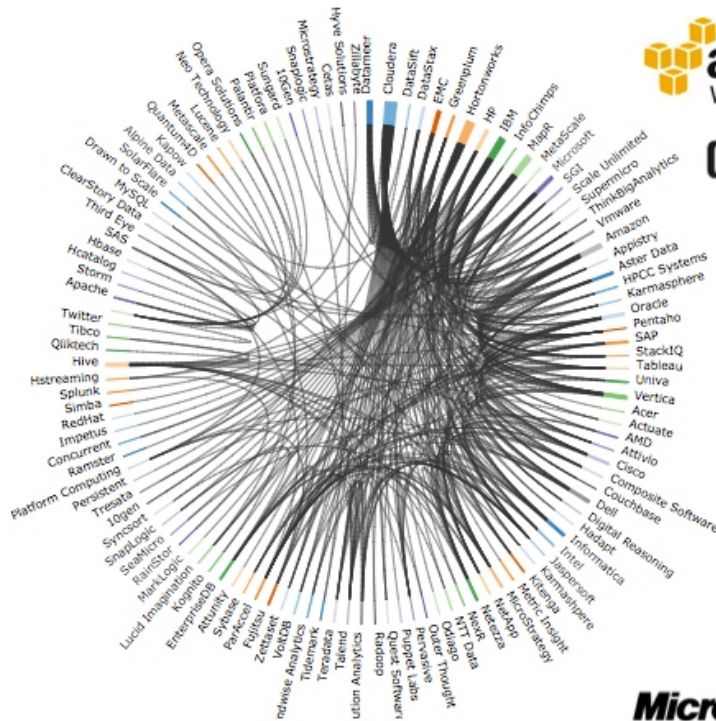
DISTRIBUTIONS SPECIFICS

not in every environment

Distribution specifics



Distros



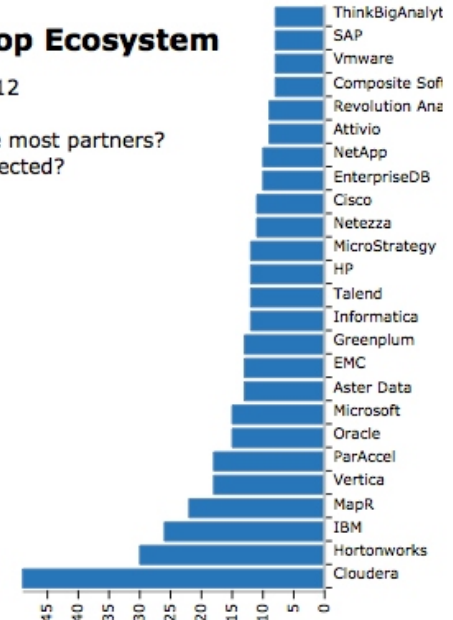
cloudera



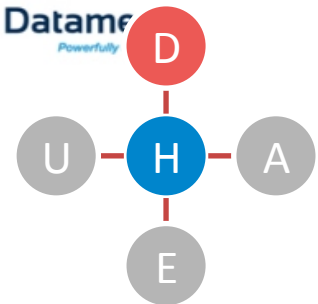
The Hadoop Ecosystem

June 21, 2012

Who has the most partners?
Who is connected?



brought to you by Datameer
Powerfully



<http://blog.cloudera.com/blog/2012/07/the-hadoop-ecosystem-visualized-in-datameer/>

Basic distinction

cloud
based

hosted
locally

Distros

How long does it take to create a new distro version?

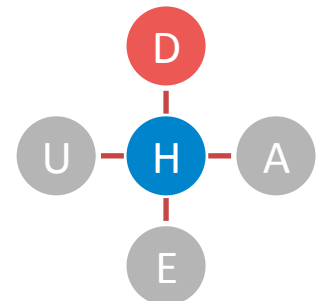
How many components are outdated at that time?

How long does it take to deploy a new distro at a company?

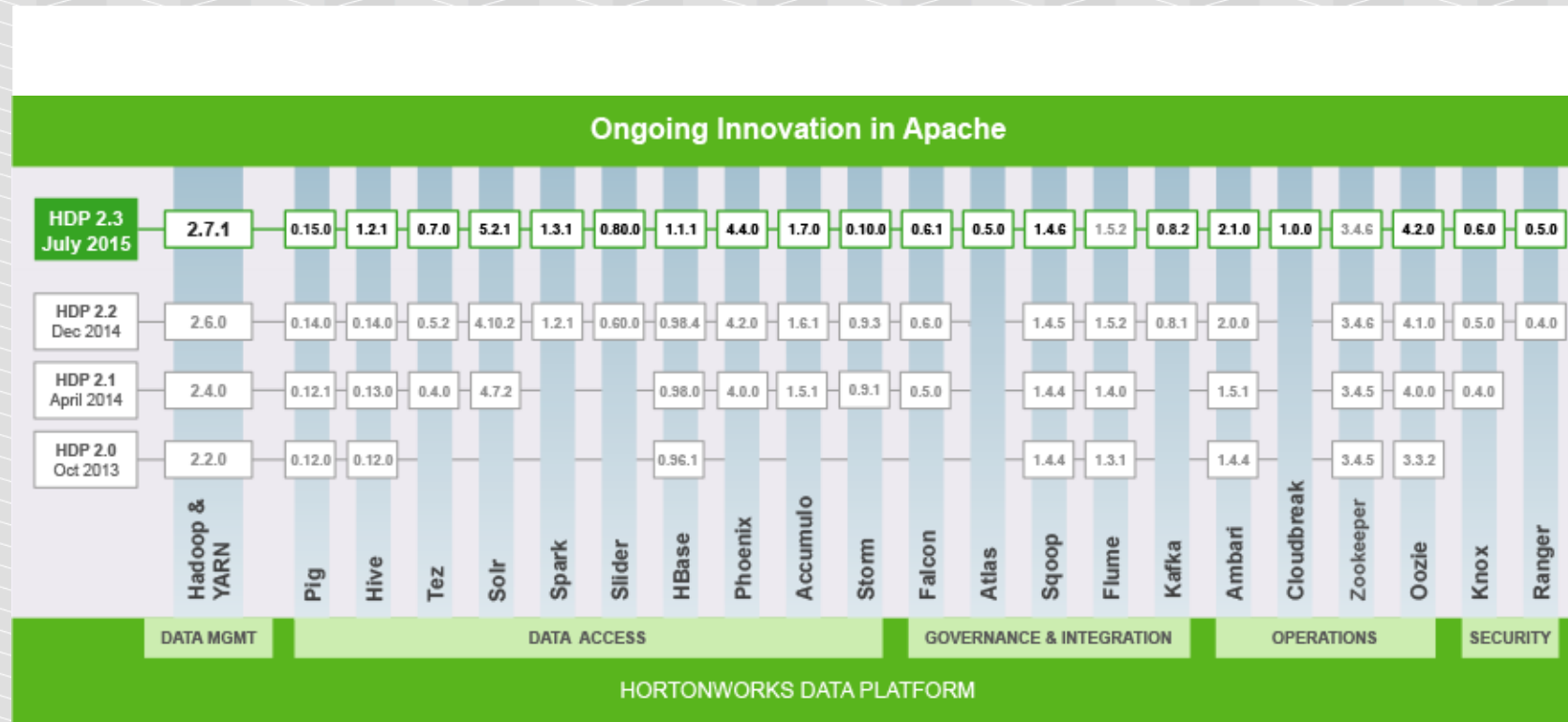
How many components are outdated at that time?

Most cases:

- MAJOR – ca. 1 year
- MINOR – ca. 3 months
- PATCH – ca. 1-2 months (differs much)



Hortonworks HDP components by version



<http://hortonworks.com/hdp/whats-new/>

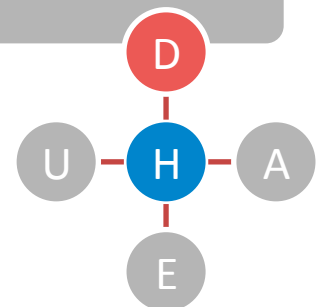
Distros

Old components with known issues

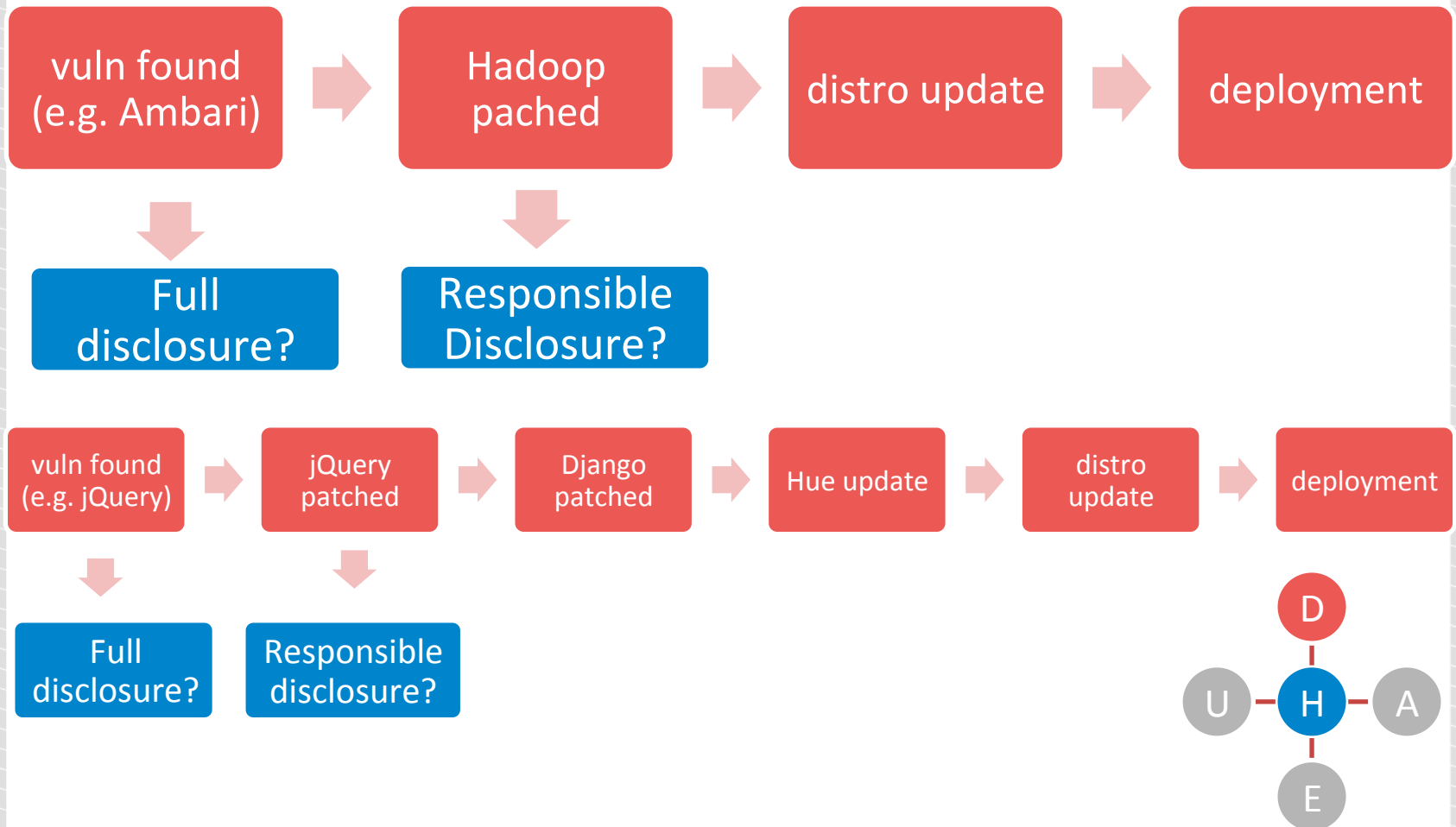
- Old OS components (java, php, ruby, etc.)
- Old OS components (e.g. old tomcat used by Oozie and HDFS)
- Old Hadoop components (e.g. old Hue, Ambari, Ranger)

Default passwords

Default configuration



Vulnerability timeline



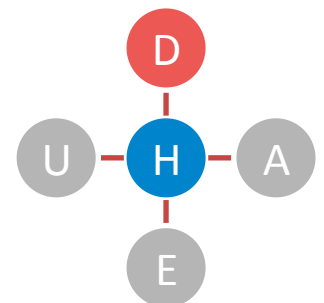
Distros

Old components with known issues

Default passwords

- SSH keys configured but default passwords still work
- Default mysql passwords, NO mysql passwords

Default configuration



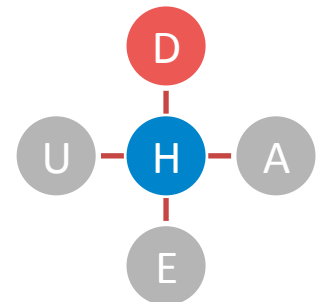
Distros

Old components with known issues

Default passwords

Default configuration

- No network level hardening
- No HTTP hardening (clickjacking, session mgmt, errors)
- Hue uses Django with DEBUG turned on by default
- „Hacking virtual appliances” by Jeremy Brown



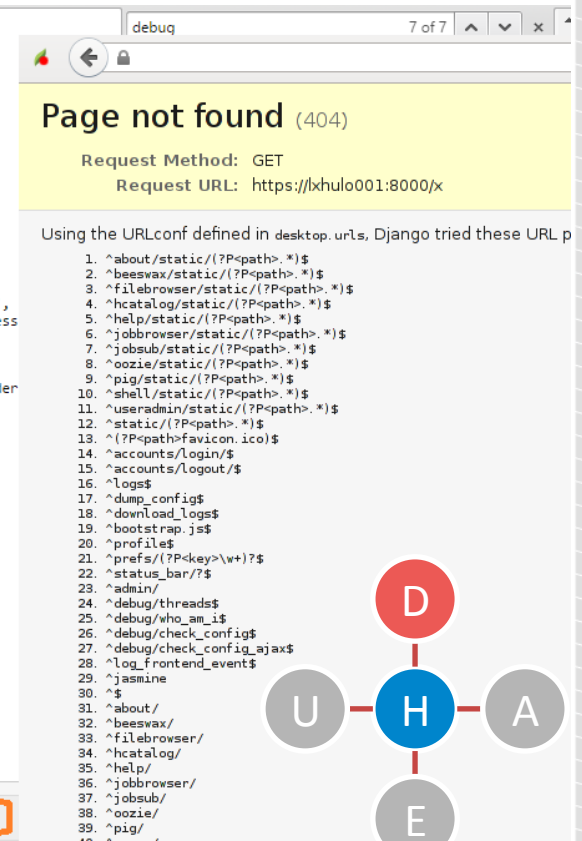
Default configurations sucks

X-Frame-Options:ALLOWALL

```

SESSION_COOKIE_DOMAIN      None
SESSION_COOKIE_NAME        'sessionid'
SESSION_COOKIE_PATH        '/;HttpOnly'
SESSION_COOKIE_SECURE      True
SESSION_ENGINE              'django.contrib.sessions.backends.db'
SESSION_EXPIRE_AT_BROWSER_CLOSE False
SESSION_FILE_PATH          None
SESSION_SAVE_EVERY_REQUEST False
SETTINGS_MODULE             'desktop.settings'
SHORT_DATETIME_FORMAT      'm/d/Y P'
SHORT_DATE_FORMAT          'm/d/Y'
SITE_ID                     1
SKIP_SOUTH_TESTS            True
TEMPLATE_CONTEXT_PROCESSORS ('django.contrib.auth.context_processors.auth', 'django.core.context_processors.debug',
                             'django.core.context_processors.media', 'django.contrib.messages.context_processors.messages')
TEMPLATE_DEBUG              False
TEMPLATE_DIRS               ('/usr/lib/hue/desktop/core/templates',)
TEMPLATE_LOADERS             ('django.template.loaders.filesystem.load_template_source', 'desktop.lib.template_loader')
TEMPLATE_STRING_IF_INVALID  ''
TEST_DATABASE_CHARSET       None
TEST_DATABASE_COLLATION    None
TEST_DATABASE_NAME          None
TEST_RUNNER                 'django.test.simple.DjangoTestSuiteRunner'
THOUSAND_SEPARATOR          ','
TIME_FORMAT                 'p'
TIME_INPUT_FORMATS          ('%H:%M:%S', '%H:%M')
TIME_ZONE                   'America/Los_Angeles'
TRANSACTIONS_MANAGED        False
URL_VALIDATOR_USER_AGENT    'Django/1.2.3 (http://www.djangoproject.com)'
USE_ETAGS                   False
USE_I18N                   True
USE_L10N                   True
USE_THOUSAND_SEPARATOR      False
X_FRAME_OPTIONS             'ALLOWALL'
YEAR_MONTH_FORMAT          'F Y'

```



debug 7 of 7

Page not found (404)

Request Method: GET
Request URL: https://lxhulo001:8000/x

Using the URLconf defined in desktop.urls, Django tried these URL patterns:

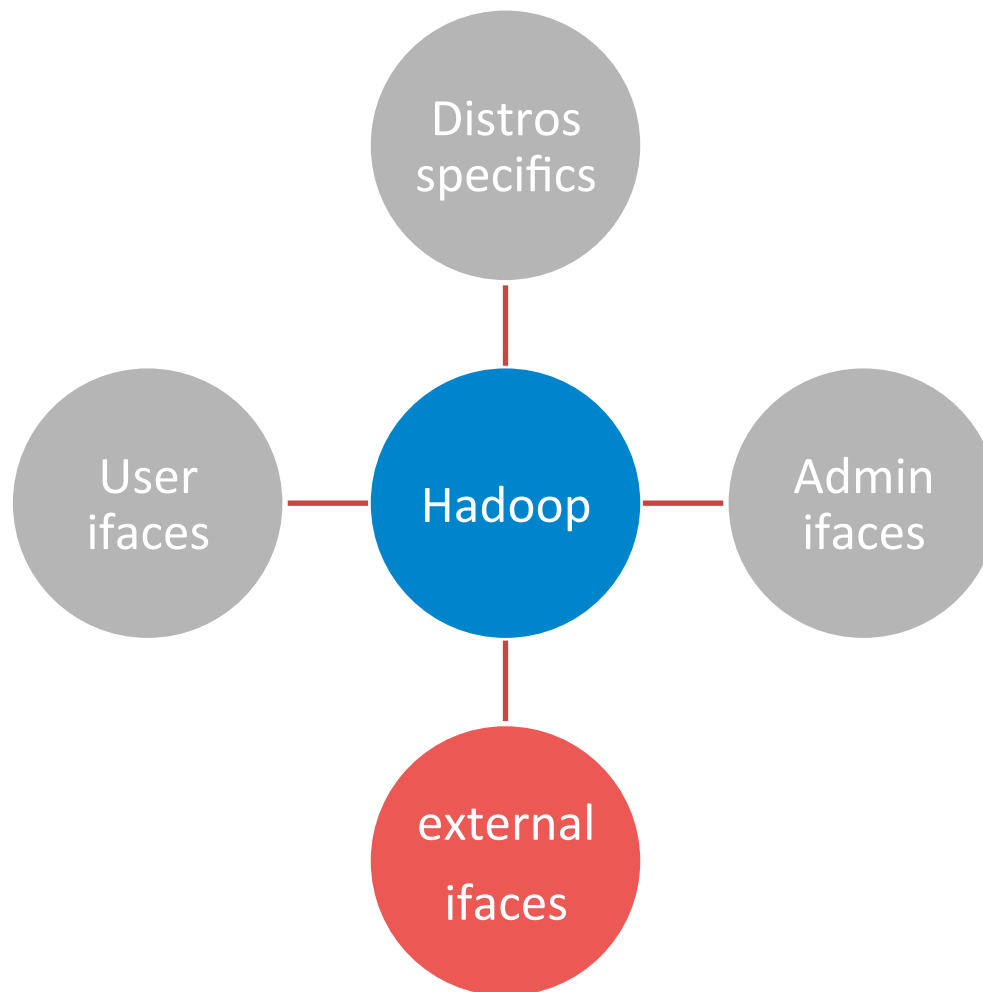
1. ^about/static/(?P<path>.*)\$
2. ^beeswax/static/(?P<path>.*)\$
3. ^filebrowser/static/(?P<path>.*)\$
4. ^hcatalog/static/(?P<path>.*)\$
5. ^help/static/(?P<path>.*)\$
6. ^jobbrowser/static/(?P<path>.*)\$
7. ^jobsub/static/(?P<path>.*)\$
8. ^oozie/static/(?P<path>.*)\$
9. ^pig/static/(?P<path>.*)\$
10. ^shell/static/(?P<path>.*)\$
11. ^useradmin/static/(?P<path>.*)\$
12. ^static/(?P<path>.*)\$
13. ^(?P<path>favicon.ico)\$
14. ^accounts/login/\$
15. ^accounts/logout/\$
16. ^logs\$
17. ^dump_config\$
18. ^download_logs\$
19. ^bootstrap.js\$
20. ^profile\$
21. ^prefs/(?P<key>w+)?\$
22. ^status_bar/?\$
23. ^admin/
24. ^debug/threads\$
25. ^debug/who_am_i\$
26. ^debug/check_config\$
27. ^debug/check_config_ajax\$
28. ^log_frontend_event\$
29. ^jasmine
30. ^\$
31. ^about/
32. ^beeswax/
33. ^filebrowser/
34. ^hcatalog/
35. ^help/
36. ^jobbrowser/
37. ^jobsub/
38. ^oozie/
39. ^pig/

You're seeing this error because you have `DEBUG = True` in your Django settings file. Change that to False, and Django will display a standard 500 page.

EXTERNAL INTERFACES

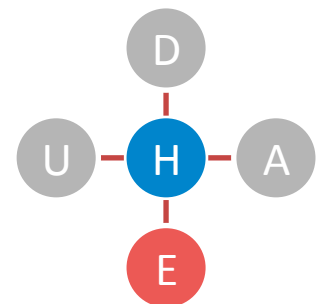
For clients or whatsoever

External interfaces

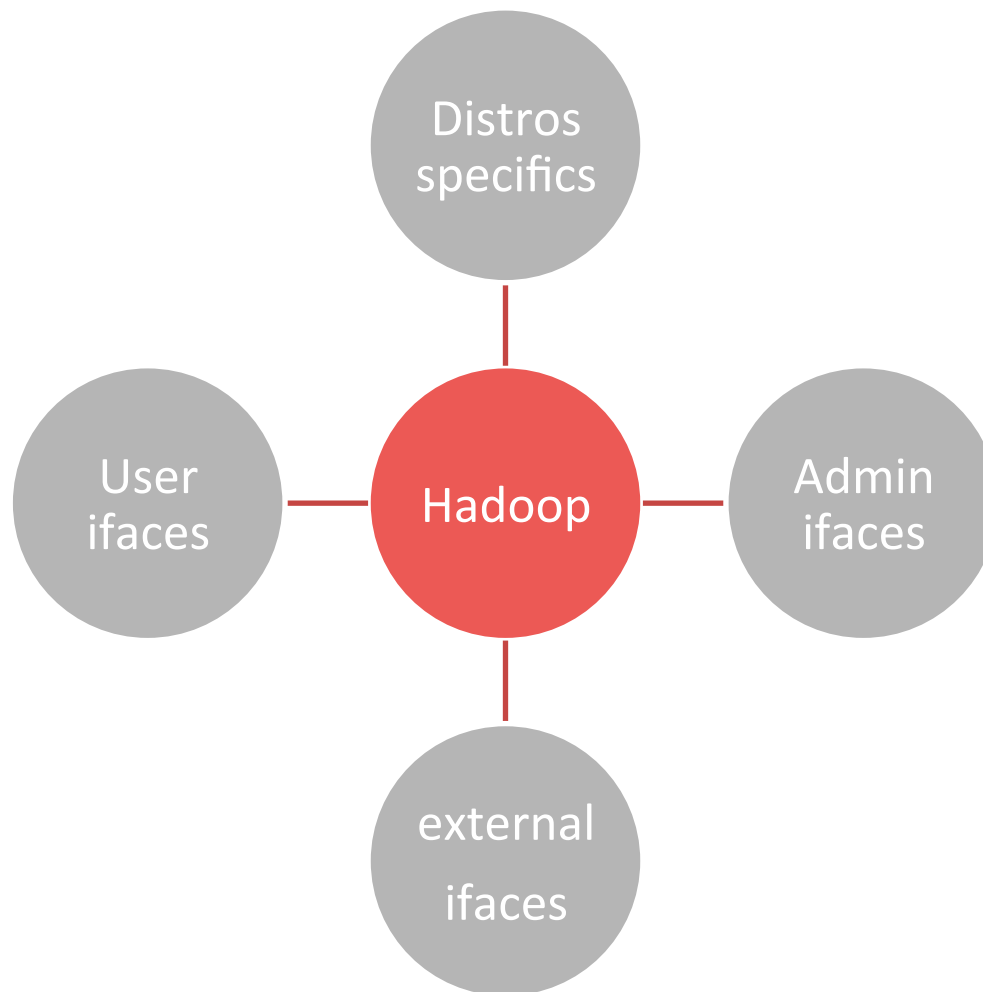


External

- More than 25 internal Apache apps/modules
- Vendor/distro specific apps/interfaces
- Popular monitoring: Ganglia, Splunk
- Auth providers: LDAP, Kerberos, OAuth
- Many apps, many targets



Hadoop



SUMMARY

ways to protect your big data environment

Ways to protect your Hadoop environment

Excessive network access

- Keep it super tight!

Excessive user permissions

Typical web vulnerabilities

Obsolete software

Distros dependent vulnerabilities

External system connections

Ways to protect your Hadoop environment

Excessive network access

Excessive user permissions

- Map business roles to permissions

Typical web vulnerabilities

Obsolete software

Distros dependent vulnerabilities

External system connections

Ways to protect your Hadoop environment

Excessive network access

Excessive user permissions

Typical web vulnerabilities

- Pentest it! Introduce application independent security countermeasures

Obsolete software

Distros dependent vulnerabilities

External system connections

Ways to protect your Hadoop environment

Excessive network access

Excessive user permissions

Typical web vulnerabilities

Obsolete software

- Make a list of all components. Monitor bugtracks and CVEs.

Distros dependent vulnerabilities

External system connections

Ways to protect your Hadoop environment

Excessive network access

Excessive user permissions

Typical web vulnerabilities

Obsolete software

Distros dependent vulnerabilities

- A pentest after integration is a must. Demand security from software suppliers.

External system connections

Ways to protect your Hadoop environment

Excessive network access

Excessive user permissions

Typical web vulnerabilities

Obsolete software

Distros dependent vulnerabilities

External system connections

- Make a list of all external system connections. Do a threat modeling and pentest corresponding systems.



MORE THAN SECURITY TESTING

Thank you

Contact me for additional materials

@j_kaluzny
jakub.kaluzny@securing.pl